

# Permobil Beds, Therapeutic Surfaces & Mattresses Guide



## Retail price list

July 2024

# About our offering

***Permobil has mattresses, therapeutic surfaces, and beds to meet an even wider variety of client needs - including different widths, lengths, and features!***

Our newest offering is a line of powered active air surfaces for complex needs. Clients benefit from the Alternating Pressure and Pulsation Therapy systems with Low Air Loss, but with an added transfer edge for improving safety and reducing entrapment risk.

We've also expanded our Permobil Modular Systems with a 42" wide Adapt 2 and now a paediatric size for a crib. These customizable mattresses provide the optimal experience for each client.

Any of these mattresses or surfaces can be placed on our popular Tröst bed for long-term care clients or Hålsa bed for home care. We even have new adjustable personal beds for home with the Resten Hi-Lo and Select. You can trust in our bed solutions to provide safety and comfort!

For more information, please contact your local sales representative or our Customer Experience team.

## ROHO® & Vicair® inlay mattress sections

**New!** With the addition of Vicair products distributed by Permobil Canada, you have a new option for mattress sections: the Vicair inlay with SmartCells that comes with a low friction cover.



These can be inserted into our: Adapt, Adapt 2, Acute, and leveling pads just as easily as the clinically proven, adjustable ROHO mattress sections. They can also be used in a number of configurations - whatever best suits your clients' needs!

Vicair also has a mattress option and heel protector device!

## To Place Your Order

To place your order, please contact our Customer Experience team at [sales.ca@permobil.com](mailto:sales.ca@permobil.com) or 800-265-9830.

To learn more, visit our website at [www.permobil.com](http://www.permobil.com).



## Table of Contents

Mattresses & therapeutic surfaces matrix .....	3
Key terms .....	4
<b>BEDS</b>	
Tröst & Tröst Plus beds, packages & accessories.....	6
Tröst HD beds, packages & accessories.....	7
Tröst Lite beds, packages & accessories.....	8
Hålsa & Hålsa Plus beds, packages & accessories.....	9
Resten Hi-Lo.....	10
Resten Select.....	11
<b>THERAPEUTIC SURFACES - Powered (Active)</b>	
Domus 4 with foam edge.....	13
Domus 4 .....	13
Domus Auto .....	13
Serene Air with foam edge .....	14
Serene Air .....	14
Pro-Care Optima .....	15
Pro-Care Turn.....	15
<b>THERAPEUTIC SURFACES - Non-Powered (Reactive)</b>	
Atlas Hybrid .....	16
Atlas Auto Comfort.....	16
<b>New!</b> Vicair 415.....	17
Therapeutic surfaces replacement covers.....	17
<b>THERAPEUTIC SURFACES - Modular Non-Powered</b>	
Adapt 2 Series .....	18-21
Acute .....	22-23
<b>MATTRESS OVERLAYS</b>	
ROHO Dry Floatation, SOFFLEX 2 & Prodigy overlays .....	24
Leveling pads .....	25
<b>MATTRESSES</b>	
Adapt.....	27
Allay.....	28
Align & Align Bariatric.....	29
Sömn, Koppla & Optima 2.....	30
Symmetry, Allieve HD & Apollo.....	31
Mattress replacement covers.....	32
<b>ACCESSORIES</b>	
Bolsters.....	13-14
Gap fillers .....	23
Overlay base .....	25
Fall mat.....	33
<b>New!</b> Maxxcare Heel Pro Evolution.....	33
Overbed tables .....	33
Halo Wing .....	33
Specifications, warranties & freight policy .....	34

# Mattresses & therapeutic surfaces matrix

Features																
	Non-powered pressure redistrib.	Shear Reduction Technology (SRT)	Insert ROHO mattress sections	Gel foam	Firm side borders	Raised bolster custom option	Special foot section	Alternating Pressure Therapy (APT)	Low Air Loss	Pulsation therapy	Continuous Lateral Rotation Technology	Recovery 5 or Recovery 5 Ultra cover	Fluid resistant cover	Plus/ bariatric sizes	Weight limit (lb)	Warranty
Mattresses																
Adapt	✓	✓	✓	✓	✓	✓	✓					✓		✓	350-500	24 months
Allay	✓	✓		✓	✓	✓						✓		✓	350-500	24 months
Align & Align Bari.	✓	✓			✓	✓	✓					✓		✓	350-800	24 months
Sömn	✓				✓	✓							✓ Startex	✓	350-500	24 months
Koppla	✓				✓								✓ Startex	✓	350-500	24 months
Optima 2	✓													✓	350-500	24 months
Symmetry	✓				✓		✓						✓ stretch	✓	350-500	24 months
Resten Bliss	✓														350-600	24 months
Therapeutic Surfaces - Powered (Active)																
Domus 4 w/ foam edge					✓			✓	✓ 8 L/min				✓ quilted	✓	450	36 months
Domus 4								✓	✓ 8 L/min				✓ quilted		450	36 months
Domus Auto								✓	✓ 8 L/min				✓ quilted		450	36 months
Serene Air w/ foam edge					✓			✓	✓ 120 L/min	✓			✓ quilted	✓	400-650	36 months
Serene Air								✓	✓ 120 L/min	✓			✓ quilted	✓	400-920	36 months
Pro-Care Optima							✓	✓	✓ 13 L/min				✓ stretch		550	36 months
Pro-Care Turn							✓	✓	✓ 13 L/min		✓		✓ stretch		395	36 months
Therapeutic Surfaces - Non-Powered (Reactive)																
Atlas Hybrid	✓			✓	✓		✓						✓ stretch	✓	500-700	36 months
Atlas Auto Comfort	✓			✓	✓	✓							✓ stretch	✓	500-700	36 months
Vicair 415	✓												✓		550	lifetime on SmartCells
Therapeutic Surfaces - Modular Non-Powered																
Adapt 2 Series	✓	✓	✓	✓	✓		✓					✓		✓	350	24 months
Acute	✓		✓	✓			✓					✓			350	24 months
Mattress Overlays																
ROHO Prodigy	✓														300	12 months
ROHO SOFFLEX2	✓														330	18 months
ROHO Dry Floatation	✓												✓	✓	unlimited	24 months
Leveling pads	✓		✓									✓			250-1,000	24 months



## New! QR code links

Check out our videos with setup instructions and extra product details. Scan them to learn more!

# Key terms



## Firm borders & bolsters

Firm perimeter borders on our many mattresses and surfaces ensure a solid transfer edge for improving safety and reducing entrapment risk. Domus 4 with foam edge (shown above) and Serene Air with foam edge air surfaces provide extra support for clients. New add-on bolsters with 6" wide transfer edges expands the 36" wide Domus 4 or Auto to 48" wide, and the Serene Air up to 60" wide.



## High resiliency and Hybrid foam

High resiliency foam is a versatile foam used in many 5 Minds Mobility mattresses. It is considered to be a highly tensile surface, and can be cut to any size.

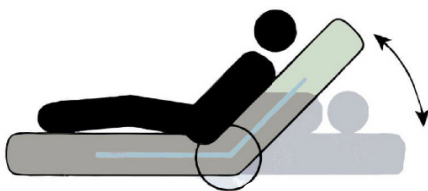
Our new Hybrid foam inserts for the Adapt 2 are even more supportive with 1.5" of high resiliency foam topped with 1.5" of Serene™ foam. Serene is similar to memory foam, but is even better for temperature regulation and breathability.



## Vicair SmartCells

Vicair mattresses and inlays are filled with innovative individual air cells called SmartCells. These non-flowing air products offer superior performance with little to no maintenance for the user or caregiver.

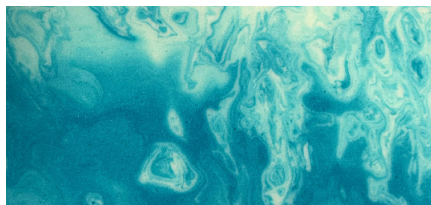
SmartCells have low surface friction which allows them to move easily against each other and to conform precisely to the body's contours. The number of SmartCells can also be adjusted to optimize pressure redistribution, positioning, and envelopment.



## Shear Reduction Technology (SRT)

5 Minds Mobility's patented SRT is an innovative solution designed to address shearing forces present during client movement in bed, or when raising the head or foot section of the bed.

Low friction material separates two layers of foam - effectively moving the shearing to the core of the mattress and away from the client.



## Gel swirl foam

Gel swirl foam provides enhanced comfort while reducing motion transfer across the mattress surface for an undisturbed sleep. The open cell structure promotes airflow allowing for excellent cooling. Gel swirl foam particles also:

- promote a cool, comfortable sleep
- ensure better heat conductivity than traditional visco elastic foam
- are non-toxic and hypo-allergenic



## Recovery 5 covers

All foam mattresses and modular foam bases and inserts include a Recovery 5 anti-microbial cover for incontinent protection. It is removable, machine-washable, and fluid-proof. The Recovery 5 Ultra is an additional zippered enclosure cover for the full mattress (and inserts) with 4-way stretch and provides up to 6X more incontinent protection.

**New!** Bottom covers under most mattress are now made with high-strength Hercules vinyl fabric.

# Beds



# Tröst & Tröst Plus

## Adjustable long-term care bed



Setup video

### At a glance

- Standard and Plus sizes available
- Trendelenburg, Reverse Trendelenburg, and Comfort chair positioning
- 12-button hand pendant
- Low position: 6.75"; High position: 30"
- Flip down directional castor locks at head end, plus swivel locking castor
- Centre step safety lock at foot end
- Mattress retainers and wall bumpers included
- Trost STD and Plus T/RT is + 17° / - 17°±3°
- Standard size: 36" x 80"; Plus size: 39" x 80" or 42" x 80" and length extension to 84"
- Weight capacity of up to 600 lb



The Tröst Bed is an electric, adjustable bed ideal for the long-term care setting and community. It offers a low height of 6.75" and a high height of 30" to meet all your caregiving and client needs. Tröst Bed has a 12-button hand pendant and optional footboard attendant controls, so customized comfort is an easy adjustment. The Trendelenburg (and Reverse Trendelenburg) feature comes standard and allows clients to lay flat on their back on a 15–30 degree incline with their feet elevated above the head. Available in a natural or wine colour head/footboard (*sold separately, except when bought as a package*), that are easy to use with quick release hardware.

### Optional features:

- Plus model expandable to 39" and 42"
- Length extension from 80" to 84" (added at foot end only)
- Embedded footboard attendant controls
- Half side rails, interchangeable between head and foot sections
- Tall half side rails
- Assist bar, interchangeable between head and foot sections
- Trapeze bar
- **New!** Slip-on rail pad covers (shown)
- Battery backup
- Transport trolley
- **Add an overbed table, see pg. 33**



The **Tröst Bed standard** package includes: 36" head and footboard, and a set of half side rails. The **Tröst Plus Bed** package options includes: 36", 39" or 42" head and footboard, and a set of half side rails. Please indicate your choice of natural or wine colour head/footboards.

Part Number	Description	Retail Price
TROST-STD-HSR-PKG	TRÖST STANDARD BED w/ HALF SIDE RAILS, 36" WIDE HEAD/FOOTBOARD	\$3,682.00
TROST-PLUS-HSR-PKG	TRÖST PLUS BARIATRIC BED w/ HALF SIDE RAILS, 36" WIDE HEAD/FOOTBOARD	\$4,094.00
TROST-PLUS-HSR-PKG-39	TRÖST PLUS BARIATRIC BED w/ HALF SIDE RAILS, 39" WIDE HEAD/FOOTBOARD	\$4,146.00
TROST-PLUS-HSR-PKG-42	TRÖST PLUS BARIATRIC BED w/ HALF SIDE RAILS, 42" WIDE HEAD/FOOTBOARD	\$4,197.00
<b>Components &amp; Accessories</b>		
TROST-STD	TRÖST STANDARD BED, 36" x 80" (EXTENDABLE TO 84"), HEAD/FOOTBOARD SOLD SEP.	\$3,064.00
TROST-PLUS	TRÖST PLUS BARIATRIC BED (EXTENDABLE TO 84" & EXPANDABLE TO 39" OR 42"), HEAD/FOOTBOARD SOLD SEP.	\$3,476.00
TROST-HFB-NATURE	TRÖST BED 36" WIDE HEAD/FOOTBOARD - NATURE	\$283.00
TROST-HFB-WINE	TRÖST BED 36" WIDE HEAD/FOOTBOARD - WINE	\$283.00
TROST-HFB-NATURE39	TRÖST BED 39" WIDE HEAD/FOOTBOARD - NATURE	\$335.00
TROST-HFB-WINE39	TRÖST BED 39" WIDE HEAD/FOOTBOARD - WINE	\$335.00
TROST-HFB-NATURE42	TRÖST BED 42" WIDE HEAD/FOOTBOARD - NATURE	\$397.00
TROST-HFB-WINE42	TRÖST BED 42" WIDE HEAD/FOOTBOARD - WINE	\$397.00
TROST-SC	EMBEDDED STAFF CONTROL	\$376.00
TROST-HSR	TRÖST BED HALF SIDE RAILS (HEAD OR FOOT, PAIR)	\$510.00
TROST-HSR-RAILPAD <b>New!</b>	TRÖST HALF SIDE RAIL PADS w/ R5 COVER, PAIR, 20" LONG	\$349.00
TROST-THSR2	TRÖST BED TALL HALF SIDE RAILS (HEAD OR FOOT, PAIR)	\$613.00
TROST-AB	ASSIST BAR (HEAD OR FOOT, SINGLE)	\$160.00
TROST-TT	TRANSPORT TROLLEY	\$695.00
TROST-TT2PQC <b>New!</b>	TRÖST BED TRANSPORT TROLLEY (2 LOCK PINS, HANDLES, 4 SWIVEL LOCKING CASTORS)	\$695.00
TROST-TB	TRÖST BED TRAPEZE BAR; 280 LB WT CAP.	\$510.00
TROST-BB	BATTERY BACKUP	\$283.00
TROST-EXT	TRÖST BED LENGTH EXTENSION (80"-84")	\$345.00

# Tröst HD

## Adjustable long-term care bed



Setup video

### At a glance

- Built-in deck expansion system allowing widths of 36", 42", and 48" with optional length extensions (80" - 84")
- 12-button hand pendant with Trendelenburg, Reverse Trendelenburg, and Comfort chair positioning
- Low position: 7"; High position: 30"
- One step locking system with flip down directional castor locks
- Mattress retainers and wall bumpers included
- Maximum Back Angle: 65°±3°, Maximum Knee Angle: 30°±3°
- Weight capacity: Up to 750 lb
- Two-piece bed frame for easy delivery

The Tröst HD Bed is an electric, adjustable bed ideal for the long-term care setting and community. With a built-in deck expansion system allowing width adjustment of 36", 42", and 48" with optional length extensions from 80" - 84", bed height adjustments from 7" to 30" and a max weight capacity of 750 lb, the HD bed will meet all your caregiving and client needs. The 12-button hand pendant and optional footboard attendant controls customize comfort with ease. The Trendelenburg (and Reverse Trendelenburg) feature comes standard and allows clients to lay flat on their back with a 15–30 degree incline, elevating their feet above the head. Available in a natural or wine colour head/footboard (*sold separately, except when bought as a package*).

### Optional features:

- Length extension from 80" to 84" (added at foot section only)
- Headboard and footboard (optional colors)
- Staff Control (embedded, hanging, or both)
- Standard or tall half side rails (head section, foot section, or both)
- Assist bar (head section, foot section, or both)
- Full side rails (only available in 36" and 42" width selections)
- **New!** Slip-on rail pad covers (shown)
- Battery backup
- Transport trolley
- Trapeze Bar
- **Add an overbed table, see pg. 33**



The **Tröst HD Bed** package includes: 36", 42" or 48" head/footboard (natural/wine colour) and a set of tall half side rails.

Part Number	Description	Retail Price
TROST-HD-THSR-PKG	TROST HEAVY DUTY (H/FOOTBOARDS 36" AND TALL HALF SIDE RAILS)	\$6,795.00
TROST-HD-THSR-PKG-42	TROST HEAVY DUTY (H/FOOTBOARDS 42" AND TALL HALF SIDE RAILS)	\$6,845.00
TROST-HD-THSR-PKG-48	TROST HEAVY DUTY (H/FOOTBOARDS 48" AND TALL HALF SIDE RAILS)	\$6,895.00
TROST-HD-FSR-PKG	TROST HEAVY DUTY (H/FOOTBOARDS 36" AND FULL HALF SIDE RAILS)	\$6,875.00
TROST-HD-FSR-PKG-42	TROST HEAVY DUTY (H/FOOTBOARDS 42" AND FULL HALF SIDE RAILS)	\$6,925.00
<b>Components &amp; Accessories</b>		
TROST-HD	TROST HEAVY DUTY BED ONLY	\$6,250.00
TROST-HFB-NATURE	HEAD AND FOOTBOARD 36" (NATURE)	\$283.00
TROST-HFB-WINE	HEAD AND FOOTBOARD 36" (WINE)	\$283.00
TROST-HFB-NATURE42	HEAD AND FOOTBOARD 42" (NATURE)	\$397.00
TROST-HFB-WINE42	HEAD AND FOOTBOARD 42" (WINE)	\$397.00
TROST-HFB-NATURE48	HEAD AND FOOTBOARD 48" (NATURE)	\$445.00
TROST-HFB-WINE48	HEAD AND FOOTBOARD 48" (WINE)	\$445.00
TROST-SC-INT-HD	STAFF CONTROL TROST HD INTEGRATED (LINAK)	\$395.00
TROST-SC-OVR-HD	TROST HEAVY DUTY STAFF CONTROL - OVERHANG (LINAK)	\$495.00
TROST-HSR	HALF SIDE RAILS - HEAD/FOOT	\$510.00
TROST-HSR-RAILPAD <b>New!</b>	TROST HALF SIDE RAIL PADS W/ R5 COVER, PAIR, 20" LONG	\$349.00
TROST-THSR2	TALL HALF SIDE RAILS - TALL HEAD/FOOT	\$613.00
TROST-FSR	TROST LIGHT AND BARI BED FULL SIDE RAILS (CAPABLE WITH 36-42" WIDTHS)	\$695.00
TROST-AB	ASSIST BAR	\$160.00
TROST-TT	TRANSPORT TROLLEY	\$695.00
TROST-TT2PQC <b>New!</b>	TROST BED TRANSPORT TROLLEY (2 LOCK PINS, HANDLES, 4 SWIVEL LOCKING CASTORS)	\$695.00
TROST-BB-HD	OPTIONAL BATTERY BACKUP - TROST HD (LINAK)	\$295.00
TROST-SC-COUPLER-HD	COUPLER FOR 2 STAFF CONTROLS ON TROST HD BED	\$195.00
TROST-EXT	LENGTH EXTENSION (80" TO -84")	\$345.00

# Tröst Lite

## Adjustable long-term care bed



Setup video

### At a glance

- Standard size of 36" x 80" with optional 4" length extension (80"- 84")
- 8-button hand pendant
- Low position: 7.3"; High position: 28.3"
- Four locking casters, two of which are flip down directional caster locks at the head section
- Mattress retainers and wall bumpers included
- Maximum Back Angle: 65°±3°, Maximum Knee Angle: 30°±3°
- Weight capacity: Up to 500 lb
- Virtually noise-free, smooth operation
- Two-piece bed frame for easy delivery and tight spaces

The Tröst LITE is a 3 function, electric, adjustable bed, ideal for the long-term care setting and community. With a two-piece low-profile bedframe, a lower bed position of 7.3" and a max height of 28.3" this long-term care bed will fill all your caregiving needs. An 8-button hand pendant and optional staff controls allow for easy and customizable comfort. Available with a natural or wine colour head/footboard (sold separately, except when bought as a package).

### Optional features:

- Length extension from 80" to 84" (added at foot section only)
- Headboard and footboard (optional colors)
- Staff Control (embedded, hanging, or both)
- Standard or tall half side rails (head section, foot section, or both)
- Assist bar (head section, foot section, or both)
- Full side rails
- **New!** Slip-on rail pad covers (shown)
- Battery backup
- Transport trolley
- **Add an overbed table, see pg. 33**



The **Tröst Lite Bed (HSR)** package includes: 36" head/footboard and a set of half side rails, while the **Tröst Lite Bed (FSR)** package includes: 36" head/footboard and a set of full side rails.

Part Number	Description	Retail Price
TROST-LITE-HSR-PKG	TROST LITE (H/FOOTBOARDS 36" & HSR, 500LBS INCL)	\$2,895.00
TROST-LITE-FSR-PKG	TROST LITE (H/FOOTBOARDS 36" & FSR, 500LBS INCL)	\$3,095.00
<b>Components &amp; Accessories</b>		
TROST-LITE	TROST LITE BED ONLY	\$2,350.00
TROST-HFB-NATURE	HEAD AND FOOTBOARD 36" (NATURE)	\$283.00
TROST-HFB-WINE	HEAD AND FOOTBOARD 36" (WINE)	\$283.00
TROST-SC-OVR-LITE	STAFF CONTROL TROST LITE OVERHANG	\$595.00
TROST-THSR2	TALL HALF SIDE RAILS - TALL HEAD/FOOT	\$595.00
TROST-HSR	HALF SIDE RAILS - HEAD/FOOT	\$510.00
TROST-HSR-RAILPAD <b>New!</b>	TRÖST HALF SIDE RAIL PADS W/ R5 COVER, PAIR, 20" LONG	\$349.00
TROST-FSR	TROST LITE AND HD BED FULL SIDE RAILS	\$695.00
TROST-AB	ASSIST BAR	\$160.00
TROST-BB-LITE	OPTIONAL BATTERY BACKUP - TROST LITE	\$345.00
TROST-EXT	LENGTH EXTENSION (80" TO -84")	\$345.00
TROST-TT2PQC <b>New!</b>	TROST BED TRANSPORT TROLLEY (2 LOCK PINS,HANDLES, 4 SWIVEL LOCKING CASTORS)	\$695.00



# Hälsa & Hälsa Plus

## Adjustable home care bed



Setup video

### At a glance

- Standard and Plus sizes available
- Trendelenburg & Reverse Trendelenburg
- Dual posts on each side increases stability at all heights
- Low position: 9.875"
- High position: 25.625"
- Disassembles into four section for easy transport or storage
- Standard size: 36" x 80"; Plus size: four width options - 36", 39", 42", and 48"
- Weight capacity of up to 375 lb for standard and 500 lb for Plus/bariatric model



The Hälsa Bed is an electric, adjustable home care bed available in standard and Plus sizes and includes a 10-button hand pendant. The Trendelenburg (and Reverse Trendelenburg) feature comes standard and allows clients to lay flat on their back on a 15–30 degree incline with their feet elevated above the head. Additionally, it offers the capability of moving both the head and foot sections simultaneously, an upgraded large castor option, and easy disassembly for transportation and storage.

### Hälsa & Hälsa Plus bed standard features:

- Natural or wine colour head/footboard
- Hooks for incontinence bag
- 3 locking castors & 1 directional locking castor
- Side and foot mattress retainers
- Receptacle for trapeze bar
- 2 receptacles for IV holder stems
- Virtually noise-free with low electrical consumption
- DC Linak motors

### Optional features:

- Assist bar or half side rails, interchangeable between head and foot sections
- Full side rails (only fits standard bed)
- **New!** Slip-on rail pad covers (shown)
- Trapeze bar
- Battery backup
- Upgraded large castor option
- **Add an overbed table, see pg. 33**



The **Hälsa Bed Half Side Rail (HSR)** package includes: 36" head and footboard, and a set of half side rails. The **Hälsa Bed Full Side Rail (FSR)** package includes: 36" head and footboard, and a set of full size rails. The **Hälsa Plus Bariatric Bed HSR** package includes: 36", 39", 42" or 48" head and footboard, and a set of half side rails. Please indicate your choice of natural or wine colour head/footboards. Wine colour option only available in the 36" wide head/footboard.

Part Number	Description	Retail Price
HALSA-STD-HSR-PKG	HÄLSA STD BED w/ HALF SIDE RAILS, 36" WIDE HEAD/FOOTBOARD; 375 LB WT CAP.	\$3,544.00
HALSA-STD-FSR-PKG	HÄLSA STD BED w/ FULL SIDE RAILS, 36" WIDE HEAD/FOOTBOARD; 375 LB WT CAP.	\$3,544.00
HALSA-PLUS-HSR-PKG	HÄLSA PLUS BED w/ HALF SIDE RAILS, 36" WIDE HEAD/FOOTBOARD; 500 LB WT CAP.	\$4,725.00
HALSA-PLUS-HSR-PKG39	HÄLSA PLUS BED w/ HALF SIDE RAILS, 39" WIDE HEAD/FOOTBOARD; 500 LB WT CAP.	\$4,778.00
HALSA-PLUS-HSR-PKG42	HÄLSA PLUS BED w/ HALF SIDE RAILS, 42" WIDE HEAD/FOOTBOARD; 500 LB WT CAP.	\$4,830.00
HALSA-PLUS-HSR-PKG48	HÄLSA PLUS BED w/ HALF SIDE RAILS, 48" WIDE HEAD/FOOTBOARD; 500 LB WT CAP.	\$4,883.00

Components & Accessories		
HALSA-STD	HÄLSA STANDARD BED, 36" x 80", HEAD/FOOTBOARD INCLUDED	\$3,334.00
HALSA-PLUS	HÄLSA PLUS BED (EXPANDABLE TO 39", 42" OR 48"), 36" HEAD/FOOTBOARD INCLUDED	\$4,515.00
HALSA-HFBC-NATURE	HÄLSA BED 36" WIDE HEAD/FOOTBOARD - NATURE	\$352.00
HALSA-HFBC-WINE	HÄLSA BED 36" WIDE HEAD/FOOTBOARD - WINE	\$352.00
HALSA-HFBC-NATURE39	HÄLSA BED 39" WIDE HEAD/FOOTBOARD - NATURE	\$405.00
HALSA-HFBC-NATURE42	HÄLSA BED 42" WIDE HEAD/FOOTBOARD - NATURE	\$457.00
HALSA-HFBC-NATURE48	HÄLSA BED 48" WIDE HEAD/FOOTBOARD - NATURE	\$510.00
HALSA-BAT2	BATTERY BACK UP	\$294.00
HALSA-HSR	HÄLSA BED HALF SIDE RAILS (HEAD OR FOOT, PAIR)	\$520.00
HALSA-HSR-RAILPAD <b>New!</b>	HÄLSA HALF SIDE RAIL PADS w/ R5 COVER, PAIR, 27.5" LONG	\$389.00
HALSA-FSR	HÄLSA BED FULL SIDE RAILS (PAIR)	\$573.00
HALSA-FSR-RAILPAD <b>New!</b>	HÄLSA FULL SIDE RAIL PADS w/ R5 COVER, PAIR, 63.5" LONG	\$649.00
HALSA-AB	ASSIST BAR (HEAD OR FOOT, SINGLE)	\$163.00
HALSA-TBB	HÄLSA BED TRAPEZE BAR BARIATRIC; 300 LB WT CAP.	\$520.00

# Resten Hi-Lo

## Adjustable elevating home comfort bed

### New Queen option!

Twin XL size shown



### At a glance

- Available in Twin XL and Queen with a height range of 16" - 30"
- Easy to adjust your position using a mobile app or the wireless remote control with castors or 12" to 26" with bed legs
- Programmable massage settings
- Built-in USB charging ports, two per side
- Reduce back pressure using the zero-gravity function
- Head & foot articulation to raise your head and feet for a healthy night's sleep
- Four quiet motors to optimize your positioning (head, foot, lumbar, and hi-low)
- Sizes: 39" x 80" and 60" x 80"
- Weight capacity of 410-800 lb

Improve the way you sleep with an adjustable bed frame that can accommodate almost any sleeping position. Resten Hi-Lo elevating adjustable beds are controlled with a wireless controller and come with advanced features to help you personalize your sleep experience. Key features include lumbar support, programmable massage, LED underbed lighting, USB charging ports, endless head & foot positioning, mattress retainer to keep it in place as the bed adjusts, and individualized controls. Bed comes with legs and upgraded castors to suit needs.

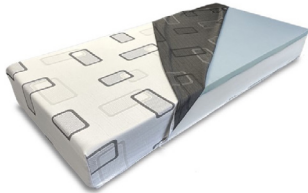
### Resten Hi-Lo bed standard features:

- Motorized lumbar support
- Bed legs (shown right) and upgraded castors
- LED underbed lighting
- Memory settings for specific positions
- Built-in USB charging ports, two per side
- Wireless remote



### Resten Bliss mattress:

- Multi-layer 10" high foam mattress, perfect for all types of sleepers
- Available in Twin XL and Queen to match the Resten Hi-Lo bed
- Removable zippered cover
- Compressed and rolled for ease of delivery
- Weight capacity is 350 lb for Twin XL and 600 lb for Queen



### Optional feature:

- Fixed side rails & new adjustable tall side rails
- [Add an overbed table, see pg. 33](#)

The **Resten Hi-Lo** bed is available in Twin XL and Queen sizes and includes castor upgrade. Side rails are sold separately. For couples wanting to adjust their own settings, put two Twin XL beds together with the free connector to make a King-sized bed!

Part Number	Description	Retail Price
RESTHL-TXL	RESTEN HI-LO BED - TWIN XL w/ UPGRADED CASTORS, 39" x 80"; 410 LB WT CAP.	\$3,195.00
RESTHL-QN <b>New!</b>	RESTEN HI-LO BED - QUEEN w/ UPGRADED CASTORS, 60" x 80"; 800 LB WT CAP.	\$3,795.00
RESTHL-TSR <b>New!</b>	RESTEN HI-LO - ADJUSTABLE TALL SIDE RAILS	\$279.00
<b>Mattress</b>		
RESTBLISSP-TXL <b>New!</b>	RESTEN BLISS MATTRESS (PLUSH) TWIN XL	\$999.00
RESTBLISSF-TXL <b>New!</b>	RESTEN BLISS MATTRESS (FIRM) TWIN XL	\$999.00
RESTBLISSP-QN <b>New!</b>	RESTEN BLISS MATTRESS (PLUSH) QUEEN	\$1,399.00
RESTBLISSF-QN <b>New!</b>	RESTEN BLISS MATTRESS (FIRM) QUEEN	\$1,399.00

# Resten Select

## Adjustable home comfort bed



**New Double option!**  
Queen size shown



### At a glance

- Available in Twin XL, Double, and Queen
- Adjust your position using the wireless remote control with built-in storage pocket
- Programmable massage settings
- Built-in USB charging ports, two per side
- Zero-gravity and anti-snore functions
- Head & foot articulation to raise your head and feet for a healthy night's sleep
- Sizes: 39" x 80", 54" x 75", and 60" x 80"
- Weight capacity of up to 600 lb

Adjustable bedframe that can accommodate almost any position to help with better sleep and decrease back pain. Key features include programmable massage, LED underbed lighting, USB charging ports, endless head & foot positioning, mattress retainer to keep it in place as the bed adjusts, and wireless controller. The fixed height legs are 12" high, but adjustable 12" legs can be added.

### Resten Select bed standard features:

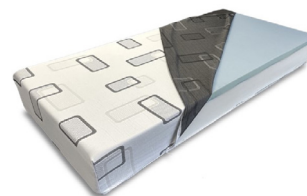
- LED underbed lighting
- Memory settings for specific positions
- Built-in USB charging ports, two per side
- Wireless controller

### Optional feature:

- Adjustable height legs
- **Add an overbed table, see pg. 33**

### Resten Bliss mattress:

- Multi-layer 10" high foam mattress, perfect for all types of sleepers
- Available in Twin XL, Double, and Queen to match the Resten Select bed
- Removable zippered cover
- Compressed and rolled for ease of delivery
- Weight capacity is 350 lb for Twin XL, 500 lb for Double, and 600 lb for Queen



**Resten Select** bed comes in your choice of Twin XL, Double, or Queen. For couples wanting to adjust their own settings, put two Twin XL together to make a split King-sized bed! Connector comes standard for the two Twin XL

Part Number	Description	Retail Price
RESTSEL-TXL	RESTEN SELECT BED - TWIN XL, 39" x 80"; 600 LB WT CAP.	\$1,995.00
RESTSEL-DB <b>New!</b>	RESTEN SELECT BED - DOUBLE, 54" x 75"; 600 LB WT CAP.	\$2,195.00
RESTSEL-QN	RESTEN SELECT BED - QUEEN, 60" x 80"; 600 LB WT CAP.	\$2,345.00
RESTSEL-ADJLEG	RESTEN SELECT - 12" ADJUSTABLE HEIGHT LEGS	\$135.00
RESTHL-TSR <b>New!</b>	RESTEN HI-LO - ADJUSTABLE TALL SIDE RAILS	\$279.00
<b>Mattress</b>		
RESTBLISSP-TXL <b>New!</b>	RESTEN BLISS MATTRESS (PLUSH) TWIN XL	\$999.00
RESTBLISSF-TXL <b>New!</b>	RESTEN BLISS MATTRESS (FIRM) TWIN XL	\$999.00
RESTBLISSP-DBL <b>New!</b>	RESTEN BLISS MATTRESS (PLUSH) DOUBLE	\$1,199.00
RESTBLISSF-DBL <b>New!</b>	RESTEN BLISS MATTRESS (FIRM) DOUBLE	\$1,199.00
RESTBLISSP-QN <b>New!</b>	RESTEN BLISS MATTRESS (PLUSH) QUEEN	\$1,399.00

# Therapeutic Surfaces

- **Powered (Active)**
- **Non-Powered (Reactive)**
- **Modular Non-Powered**
- **Mattress Overlays**

# Domus 4 with foam edge

## Low Air Loss Alternating Pressure Therapy system with transfer edge



**Domus pump:** Client weight references are added into the control panel so caregivers can easily find the correct level of comfort and firmness needed for optimum comfort and healing.

**New bolsters transform Domus 4 or Auto into a 48" wide edge surface!**



### At a glance

- Suitable for clients with medium to high risk for pressure injuries
- Low Air Loss for microclimate control
- 3" wide transfer edges
- Fluid-resistant, four-way stretch, quilted cover
- Zippered cover allows for one-step removal
- Maximum client weight of up to 450 lb
- 2 widths: 36" / 42" x 79"L x 8"H
- **Gap filler extends surface to 84"L**, see pg. 22

Domus 4 with foam edge APT system takes powered therapeutic surfaces to the next level with the added safety feature of a 3" wide transfer edge. This helps enable safe and easy transfers on and off the surface, and also reduces falls and entrapment. This therapeutic surface has a 10-minute operating cycle that allows the bladders to inflate/deflate to offload and transfer body pressure. Functions include Alternating Pressure Therapy and Constant Low Pressure (static), and the system also features max inflate and seat inflation for the Fowler position. The lower 2" of base foam remain static to prevent bottoming out during power outages. **New bolsters** with full enclosure R5 cover and 6" wide firm transfer edges on each side can transform 36" wide Domus 4 or Auto into a 48" wide surface\*.

Part Number	Description	Retail Price
DOM4EDG36	DOMUS 4 w/ FOAM EDGE 36" SYSTEM: AIR SURFACE, PUMP, TOP & BOTTOM COVERS; 450 LB WT CAP.	\$3,670.00
DOM4EDG42	DOMUS 4 w/ FOAM EDGE 42" SYSTEM: AIR SURFACE, PUMP, TOP & BOTTOM COVERS; 450 LB WT CAP.	\$4,615.00
DOMUS-PUMP	REPLACEMENT PUMP; USED ON ALL DOMUS SURFACES	\$1,295.00
BOLSTER48	FOAM BOLSTER WITH 6" FIRM TRANSFER EDGES ON EACH SIDE; FITS 36" DOMUS 4 or AUTO*	\$849.00

\*Domus system sold separately

# Domus 4

## Low Air Loss Alternating Pressure Therapy system



**New bolsters transform Domus 4 or Auto into a 48" wide edge surface!**



### At a glance

- Suitable for clients with medium to high risk for pressure injuries
- Low Air Loss for microclimate control
- Cell-on-cell bladder to avoid bottoming out
- Silver\* nylon, fluid-resistant, quilted cover
- Zippered cover allows for one-step removal
- Visual and audible alarm enhances clients' safety & security
- Maximum client weight of up to 450 lb
- 35.5"W x 79"L x 8"H; **gap filler extends surface to 84"L**, see pg. 22

Domus 4 Alternating Pressure Therapy system has a 10-minute operating cycle that allows the bladders to inflate/deflate to offload and transfer body pressure. Functions include Alternating Pressure Therapy and Constant Low Pressure (static), and the system also features max inflate and seat inflation for the Fowler position. To protect your clients, the Domus 4 has a number of added safety features like a cell-on-cell bladder to avoid bottoming out, a highly visible CPR release valve, and an auto-lock on the settings after five (5) minutes.

Part Number	Description	Retail Price
DOM436	DOMUS 4 SYSTEM: AIR SURFACE, PUMP, TOP & BOTTOM COVERS; 450 LB WT CAP.	\$2,095.00

# Domus Auto

## Alternating Pressure Redistribution System

Domus Auto Alternating Pressure Therapy system has all the same features of the Domus 4 system (see above) with the added convenience of an automatic adjustment system that allows for fast and simple setup, along with finetuning to optimize client comfort.

Part Number	Description	Retail Price
DOMAUTO36	DOMUS AUTO SYSTEM: AIR SURFACE, PUMP, TOP & BOTTOM COVERS; 450 LB WT CAP.	\$2,620.00



## Serene Air with foam edge

### True Low Air Loss APT & Pulsation system with transfer edge



**Serene pump:** Client weight references are incorporated into the control panel so caregivers can easily find the correct level of comfort and firmness needed for optimum comfort and healing.



#### At a glance

- Suitable for vulnerable clients with high to very high risk for pressure injuries
- True Low Air Loss for microclimate control
- High performance blower offers >120 L/min of air loss for effective microclimate control
- 3" wide transfer edges plus 2" foam layer built into the surface base
- Fluid-resistant, four-way stretch, quilted cover
- Zippered cover allows for one-step removal
- Maximum client weight of up to 650 lb
- 2 widths: 36" / 42" x 79"L x 8"H
- **Gap filler extends surface to 84"L**, see pg. 22

Serene Air with foam edge is a dual mode system with Alternating Pressure Therapy (APT) or Pulsation options with the added safety feature of a 3" wide transfer edge. This helps enable safe and easy transfers on and off the surface, and also reduces falls and entrapment. APT modes assist in wound healing and prevention and there are four operating cycles (5/10/15/20 min.) based on therapy requirements. The Pulsation mode increases and decreases the surface's air volume every 15 seconds. Serene Air with foam edge also has a Constant Low Pressure (static) option, as well as a max inflate and seat inflation for the Fowler position. A 2" foam layer is also built into the base of the surface to prevent clients from bottoming out. **New bolsters** (shown at right) with full enclosure R5 cover and 6" wide firm transfer edges on each side combine with Serene Air systems to make edged surfaces in 48", 54", and 60" widths\*.



Part Number	Description	Retail Price
SERAEDG36	SERENE AIR w/ FOAM EDGE 36" SYSTEM: AIR SURFACE, PUMP, TOP & BOTTOM COVERS; 400 LB WT CAP.	\$7,345.00
SERAEDG42	SERENE AIR w/ FOAM EDGE 42" SYSTEM: AIR SURFACE, PUMP, TOP & BOTTOM COVERS; 650 LB WT CAP.	\$8,395.00
SERENE-PUMP	REPLACEMENT PUMP; USED ON ALL SERENE SURFACES	\$3,460.00
BOLSTER48	FOAM BOLSTER WITH 6" FIRM TRANSFER EDGES ON EACH SIDE; FITS 36" SERENE AIR*	\$849.00
BOLSTER54	FOAM BOLSTER WITH 6" FIRM TRANSFER EDGES ON EACH SIDE; FITS 42" SERENE AIR*	\$949.00
BOLSTER60	FOAM BOLSTER WITH 6" FIRM TRANSFER EDGES ON EACH SIDE; FITS 48" SERENE AIR*	\$1,049.00

\*Serene Air system sold separately

## Serene Air

### True Low Air Loss Alternating Pressure Therapy & Pulsation system



#### At a glance

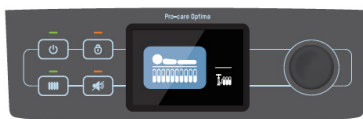
- Suitable for vulnerable clients with high to very high risk for pressure injuries
- True Low Air Loss for microclimate control
- High performance blower offers >120 L/min of air loss for effective microclimate control
- Silver+ nylon, fluid-resistant, quilted cover
- Zippered cover allows for one-step removal
- Maximum client weight of up to 920 lb (on 48" mattress)
- 3 widths: 36" / 42" / 48" x 79"L x 8"H
- **Gap filler extends surface to 84"L**, see pg. 22

Serene Air is a dual mode system with Alternating Pressure Therapy (APT) or Pulsation options. Serene Air also has a Constant Low Pressure (static) option, as well as a max inflate and seat inflation for the Fowler position. It includes a zippered full-length pocket with a 1" high foam base. Initial inflation takes less than three (3) minutes, and the surface has a quilted top cover with high moisture vapor transmission rate (MVTR). Serene Air has a number of added safety and convenience features: auto-lock on the settings after five (5) minutes, accessible and highly visible CPR release valve at the control pump, plus a handy carrying bag for compact storage and transport.

Part Number	Description	Retail Price
SERA36	SERENE AIR 36" SYSTEM: AIR SURFACE, PUMP, T&B COVERS, CARRYING BAG; 400 LB WT CAP.	\$6,295.00
SERA42	SERENE AIR 42" SYSTEM: AIR SURFACE, PUMP, T&B COVERS, CARRYING BAG; 650 LB WT CAP.	\$7,345.00
SERA48	SERENE AIR 48" SYSTEM: AIR SURFACE, PUMP, T&B COVERS, CARRYING BAG; 920 LB WT CAP.	\$8,395.00

## Pro-Care Optima

### Alternating Pressure Therapy



**Pro-Care Optima pump:** One-touch set up, auto-sensing technology, and an intuitive graphic display. System has four operating cycles (10/15/20/25 min.) to meet clients' needs.

#### At a glance

- Suitable for clients with high to very high risk for pressure injuries
- Auto-sensing & auto-inflation technology, with intuitive one-touch set up
- Comes standard with built-in battery backup
- Multi-zone air pressure for optimal comfort, including zero-pressure heel protection zone
- Fluid-resistant and four-way stretch cover
- Maximum client weight of up to 550 lb
- 36"W x 79"L x 8"H

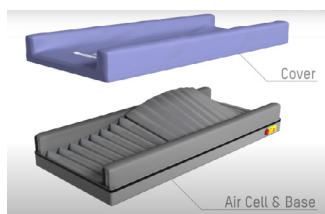
Pro-Care Optima Alternating Pressure Therapy system provides stability and comfort with three distinct zones. It fits your clients' contours offering offloading/redirection pressure with distinct zones: torso, lower legs, and a static head pillow. The surface features a six cell-in-cell bladder for the sacrum area to provide excellent support when clients are sitting up. This prevents bottoming out, and the rectangular cells offer comfortable pressure relief. With a simple control knob located on the side of the five cylinders at the foot section, you can activate the zero pressure heel protection that allows the heels to be offloaded by deflating up to two bladders in the lower leg zone of the surface.

The auto-adjust feature provides optimal pressure based on the client's changing weight distribution. It also auto-inflates and adjusts pressure in the Fowler position when the head section is raised over 30 degrees to prevent bottoming out. Pro-Care Optima has the battery backup built-in which gives peace of mind and added protection. It can provide non-stop therapy for six hours during transport or in case of power failure.

Part Number	Description	Retail Price
PCOPT	PRO-CARE OPTIMA 36": AIR SURFACE, PUMP, TOP & BOTTOM COVERS; 550 LB WT CAP.	\$10,495.00

## Pro-Care Turn

### Continuous Lateral Rotation Technology (CLRT)



#### At a glance

- Suitable for clients with high to very high risk for pressure injuries
- 30° of bilateral rotation therapy to enhance pressure relief
- 3-in-1 therapy available with effortless client repositioning
- Fluid-resistant and four-way stretch cover
- Zippered cover allows for one-step removal
- Visual and audible alarm enhances clients' safety & security
- Maximum client weight of up to 395 lb
- 35.5"W x 79"L x 5"H, with 10" H side bolsters

Bilateral turning can significantly reduce pressure on a client's body while increasing capillary circulation. For immobile or unconscious clients, caregivers must turn them up to 10x/day to achieve this. With the Pro-Care Turn surface, it saves caregivers' time, resources, and health while maintaining quality care for their clients. The 30° degrees of turning not only complies with clinical guidelines, but also provides optimal comfort.

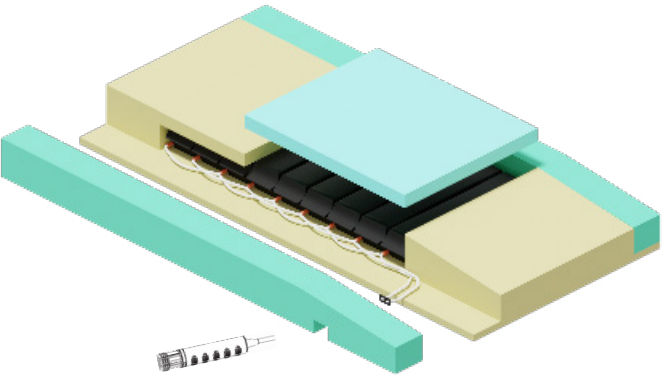
There are three therapies available: CLRT, Alternating Pressure (APT), and Continuous Low Pressure modes, and they can be tailored to individual pressure care plans. The Turning dwell time can be selected between 10, 20, 30, and 60 minutes. APT mode that assists in wound healing and prevention is available in four operating cycles (10/15/20/25 min.) based on therapy requirements.

The high side bolsters reduce the risk of bed entrapment and accidental falling out of bed, and they support the client's arms while in turning therapy. The system also features seat inflation for the Fowler position, and single air-cell deflation for the vulnerable heel section allowing them to float with zero pressure. To protect your clients, the Pro-Care Turn has a number of added safety features like a rotation pause function to allow caregivers to stop a turn right away, transport mode that maintains static pressure relief for six hours during transport or a power failure, plus an accessible and highly visible CPR release valve.

Part Number	Description	Retail Price
PCTURN	PRO-CARE TURN: AIR SURFACE, PUMP, TOP & BOTTOM COVERS; 395 LB WT CAP.	\$10,495.00

# Atlas Hybrid

Non-powered foam and air surface with adjustable firmness



The Atlas Hybrid is a non-powered, self-adjusting mattress that utilizes equalization technology to provide maximum pressure redistribution for the prevention and treatment of pressure injuries. The multi-zone top has Serene™ foam in the middle section for immersion plus a 5-degree sloped foot section made with Super Soft™ foam to help transfer excess pressure from the heels. Beneath the top layer, interconnected chambers provide pressure redistribution, and there are 4" wide firm borders to ensure a solid transfer edge.

A manual ROHO air pump can be used to easily adjust the softness/firmness of the chambers. Both the closure kit and pump come included with the Atlas Hybrid.



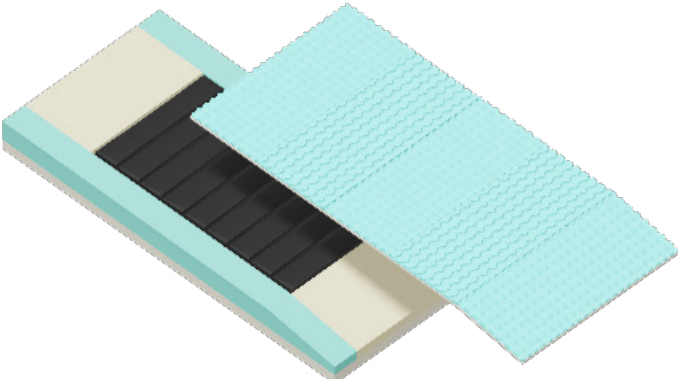
## At a glance

- Suitable for vulnerable clients at risk for pressure injuries
- Interconnected chambers and valves for pressure redistribution
- ROHO pump adjusts the firmness
- Sloped foot section helps reduce pressure from heels
- 4" wide firm borders for safe transfers
- Fluid-resistant, four-way stretch cover
- Maximum client weight of up to 500-700 lb depending on size of surface
- Atlas Hybrid is available in three widths: 35" / 39" / 42" and 80"L x 7"H; custom sizes are available

Part Number	Description	Retail Price
ATL3580	ATLAS 35" x 80" HYBRID SYSTEM: FOAM SURFACE, TOP & BOTTOM COVERS; 500 LB WT CAP.	\$1,945.00
ATL3980	ATLAS 39" x 80" HYBRID SYSTEM: FOAM SURFACE, TOP & BOTTOM COVERS; 600 LB WT CAP.	\$2,095.00
ATL4280	ATLAS 42" x 80" HYBRID SYSTEM: FOAM SURFACE, TOP & BOTTOM COVERS; 700 LB WT CAP.	\$2,295.00

# Atlas Auto Comfort

Non-powered foam and air surface with closed circuit



## At a glance

- Suitable for vulnerable clients at risk for pressure injuries
- Interconnected chambers in a closed circuit for self-adjusting pressure redistribution
- Sloped foot section helps reduce pressure from heels
- 1" high convoluted foam top layer for comfort
- 4" wide firm borders for safe transfers
- Fluid-resistant, four-way stretch cover
- Maximum client weight of up to 500-700 lb depending on size of surface
- Atlas Auto Comfort is available in three widths: 35" / 39" / 42" and 80"L x 7"H; custom sizes are available

Atlas Auto Comfort uses equalization technology to provide maximum pressure redistribution to prevent pressure injuries or to support the healing process. Beneath the 1" top layer of convoluted high resiliency foam there are interconnected chambers in a closed circuit to provide self-adjusting pressure redistribution. Clients also benefit from 4" wide firm borders to ensure a solid transfer edge. Atlas Auto Comfort includes a 5-degree sloped foot section to help transfer excess pressure from the heels.

Part Number	Description	Retail Price
ATLAC3580	ATLAS AC 35" x 80" SYSTEM: FOAM SURFACE, TOP & BOTTOM COVERS; 500 LB WT CAP.	\$1,895.00
ATLAC3584	ATLAS AC 35" x 84" SYSTEM: FOAM SURFACE, TOP & BOTTOM COVERS; 500 LB WT CAP.	\$1,995.00
ATLAC3980	ATLAS AC 39" x 80" SYSTEM: FOAM SURFACE, TOP & BOTTOM COVERS; 600 LB WT CAP.	\$2,045.00
ATLAC3984	ATLAS AC 39" x 84" SYSTEM: FOAM SURFACE, TOP & BOTTOM COVERS; 600 LB WT CAP.	\$2,145.00
ATLAC4280	ATLAS AC 42" x 80" SYSTEM: FOAM SURFACE, TOP & BOTTOM COVERS; 700 LB WT CAP.	\$2,245.00
ATLAC4284	ATLAS AC 42" x 84" SYSTEM: FOAM SURFACE, TOP & BOTTOM COVERS; 700 LB WT CAP.	\$2,345.00

# Vicair 415 mattress

## Crafted with SmartCell technology



### At a glance

- Suitable for vulnerable clients at risk for or with existing pressure injuries
- Easy to set up and low maintenance, can be used on any bedframe
- 36 compartments with SmartCell technology
- Low friction inner cover is fluid-proof and minimizes shear
- Loose fitting, fluid-proof outer cover encourages immersion and is easy to clean
- Foam layer built into the surface base
- Lightweight for easy transport (22 lb)
- Maximum client weight limit of up to 550 lb
- 36" x 80"L x 5.9"H; custom sizes are available

The Vicair Mattress is a premium pressure-relieving sleep solution known for its exceptional comfort and support. Crafted with innovative SmartCell technology, it adapts to your body's contours, ensuring an ideal balance between softness and firmness. Its durable construction provides longevity, while the materials help regulate temperature for a restful night's sleep.



The air-filled SmartCells in 36 zippered compartments make an extremely lightweight, non-powered, and low maintenance mattress that can be customized by adding/removing the SmartCells within. The combination of an inner and outer cover helps to minimize shear forces and optimize immersion, and there is also a 2" foam layer built into the surface base to prevent bottoming out. **Custom sizes are available.**

Part Number	Description	Retail Price
ARM415/LF/90200 <b>New!</b>	VICAIR 415 MATTRESS 36" x 80" w/ LOW FRICTION COVER; 550 LB WT CAP.	\$3,675.00
	CUSTOM SIZES WITH LOW FRICTION COVER	\$4,995.00

## Therapeutic surfaces replacement covers

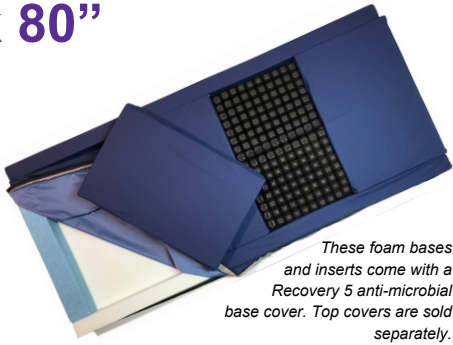
Part Number	Description	Retail Price
COV-DOM4EDG36	TOP COVER, DOMUS 4 w/ FOAM EDGE 36x80 (FLUID-RESISTANT, MULTI-WAY STRETCH, QUILTED, ZIPPERED)	\$503.00
COV-DOM4EDG42	TOP COVER, DOMUS 4 w/ FOAM EDGE 42x80 (FLUID-RESISTANT, MULTI-WAY STRETCH, QUILTED, ZIPPERED)	\$556.00
COV-DOM36	TOP COVER, DOMUS 4/AUTO 36x80 (SILVER* NYLON, FLUID-RESISTANT, QUILTED, ZIPPERED)	\$398.00
COV-SERA3680	TOP COVER, SERENE AIR 36x80 (SILVER* NYLON, FLUID-RESISTANT, QUILTED, ZIPPERED)	\$414.00
COV-SERA4280	TOP COVER, SERENE AIR 42x80 (SILVER* NYLON, FLUID-RESISTANT, QUILTED, ZIPPERED)	\$469.00
COV-SERA4880	TOP COVER, SERENE AIR 48x80 (SILVER* NYLON, FLUID-RESISTANT, QUILTED, ZIPPERED)	\$524.00
COV-SERAEDG36	TOP COVER, SERENE AIR w/ FOAM EDGE 36x80 (FLUID-RESISTANT, MULTI-WAY STRETCH, QUILTED, ZIPPERED)	\$529.00
COV-SERAEDG42	TOP COVER, SERENE AIR w/ FOAM EDGE 42x80 (FLUID-RESISTANT, MULTI-WAY STRETCH, QUILTED, ZIPPERED)	\$583.00
COV-PCOPT	TOP COVER, PRO-CARE OPTIMA (FLUID-RESISTANT, MULTI-WAY STRETCH, ZIPPERED)	\$469.00
COV-PCTURN	TOP COVER, PRO-CARE TURN (FLUID-RESISTANT, MULTI-WAY STRETCH, ZIPPERED)	\$800.00
COV-ATL3580	FULL ENCLOSURE COVER, ATLAS HYBRID 35x80 (FLUID-RESISTANT, MULTI-WAY STRETCH)	\$394.00
COV-ATL3980	FULL ENCLOSURE COVER, ATLAS HYBRID 39x80 (FLUID-RESISTANT, MULTI-WAY STRETCH)	\$415.00
COV-ATL4280	FULL ENCLOSURE COVER, ATLAS HYBRID 42x80 (FLUID-RESISTANT, MULTI-WAY STRETCH)	\$499.00
COV-ATLAC3580	FULL ENCLOSURE COVER, ATLAS AUTO COMFORT 35x80 (FLUID-RESISTANT, MULTI-WAY STRETCH)	\$394.00
COV-ATLAC3584	FULL ENCLOSURE COVER, ATLAS AUTO COMFORT 35x84 (FLUID-RESISTANT, MULTI-WAY STRETCH)	\$394.00
COV-ATLAC3980	FULL ENCLOSURE COVER, ATLAS AUTO COMFORT 39x80 (FLUID-RESISTANT, MULTI-WAY STRETCH)	\$415.00
COV-ATLAC3984	FULL ENCLOSURE COVER, ATLAS AUTO COMFORT 39x84 (FLUID-RESISTANT, MULTI-WAY STRETCH)	\$415.00
COV-ATLAC4280	FULL ENCLOSURE COVER, ATLAS AUTO COMFORT 42x80 (FLUID-RESISTANT, MULTI-WAY STRETCH)	\$499.00
COV-ATLAC4284	FULL ENCLOSURE COVER, ATLAS AUTO COMFORT 42x84 (FLUID-RESISTANT, MULTI-WAY STRETCH)	\$499.00
ARMCV415/LF/90200 <b>New!</b>	VICAIR LOW FRICTION COVER (36" x 80")	\$315.00
	CUSTOM SIZE VICAIR LOW FRICTION COVER	\$595.00

**Note:** Adapt 2 and Acute modular systems have their covers listed on their product pages.



# Adapt 2 Series modular system 36" x 80"

The Adapt 2 mattress with SRT is an innovative way to reduce the effects of pressure, friction and shear within the body of the mattress. The 3" wide firm perimeter borders and 4" permanent gel foam foot border hold your choice of inserts in place without the need for snaps. The surface inserts can be configured based on the individual client's needs. **The removable top cover with its 360° zipper must be ordered separately.** **New!** Vicair mattress inlay sections with included low friction cover can also be added to Adapt 2 systems. Weight capacity: 350 lb



Part Number	Description	Retail Price
AD2-SYS1-36	ADAPT 2 SERIES SYSTEM 1 PKG. INCLUDES 1 ROHO MATTRESS SECTION (19" x 30")	\$3,292.00
AD2-SYS2-36	ADAPT 2 SERIES SYSTEM 2 PKG. INCLUDES 2 ROHO MATTRESS SECTIONS (19"x 30")	\$4,260.00
AD2-SYS3-36	ADAPT 2 SERIES SYSTEM 3 PKG. INCLUDES 3 ROHO MATTRESS SECTIONS (19" x 30")	\$5,278.00
AD2-SYS4-36	ADAPT 2 SERIES SYSTEM 4 PKG. INCLUDES 4 ROHO MATTRESS SECTIONS (19" x 30")	\$6,246.00
AD2-SYS5-36	ADAPT 2 SERIES SYSTEM 5 PKG. INCLUDES 2 ROHO MATTRESS SECTIONS (19" x 30")	\$4,260.00
UPGRADE	UPGRADE THE HIGH RESILIENCY FOAM INSERTS TO HYBRID FOAM	\$209.00
SUBSTITUTION <b>New!</b>	SWITCH ROHO MATTRESS SECTION TO VICAIR INLAY	\$0.00

<b>System 1</b> <b>AD2-SYS1-36</b>	<b>System 2</b> <b>AD2-SYS2-36</b>	<b>System 3</b> <b>AD2-SYS3-36</b>	<b>System 4</b> <b>AD2-SYS4-36</b>	<b>System 5</b> <b>AD2-SYS5-36</b>
Foam base covered with Recovery 5	Foam base covered with Recovery 5	Foam base covered with Recovery 5	Foam base covered with Recovery 5	Foam base covered with Recovery 5
1 x ROHO mattress section (19" x 30")	2 x ROHO mattress sections (19" x 30")	3 x ROHO mattress sections (19" x 30")	4 x ROHO mattress sections (19" x 30")	2 x ROHO mattress sections (19" x 30")
1 x AD2-3030FS	1 x AD2-3030FS	1 x AD2-1930FS		1 x AD2-3030FS
1 x AD2-1930FS	1 x AD2-830FS			1 x AD2-830FS
1 x AD2-830FS				

## Top cover options

Part Number	Description	Retail Price
AD2-TC3680	TOP COVER, ADAPT 2 36x80 (RECOVERY 5 FLUID-RESISTANCE, MULTI-WAY STRETCH, ZIPPERED)	\$424.00
AD2-TC3680-R5U	TOP COVER, ADAPT 2 36x80 (RECOVERY 5 ULTRA SUPERIOR FLUID-RESISTANCE, MULTI-WAY STRETCH, ZIPPERED)	\$546.00

See replacement inserts & covers on page 21

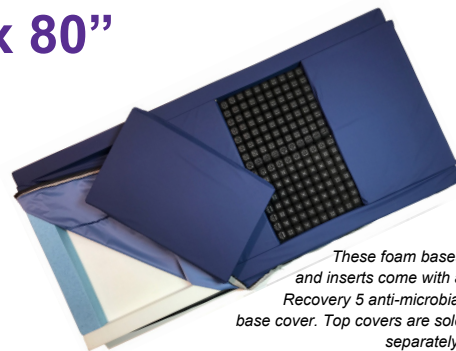


# Adapt 2 Series modular system 39" x 80"

The Adapt 2 mattress with SRT is an innovative way to reduce the effects of pressure, friction and shear within the body of the mattress. The 3" wide firm perimeter borders and 4" permanent gel foam foot border hold your choice of inserts in place without the need for snaps. The surface inserts can be configured based on the individual client's needs. **The removable top cover with its 360° zipper must be ordered separately.**

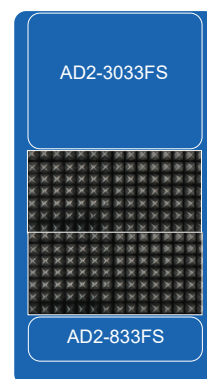
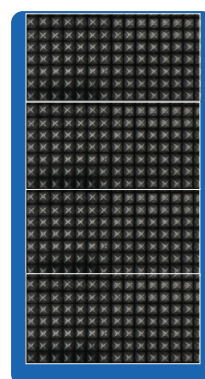
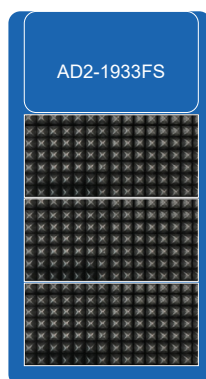
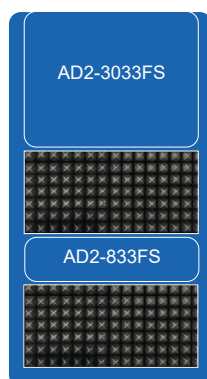
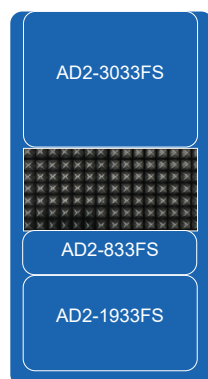
**New!** Vicair mattress inlay sections with included low friction cover can also be added to Adapt 2 systems.

Weight capacity: 350 lb



These foam bases and inserts come with a Recovery 5 anti-microbial base cover. Top covers are sold separately.

Part Number	Description	Retail Price
AD2-SYS1-39	ADAPT 2 SERIES SYSTEM 1 PKG. INCLUDES 1 ROHO MATTRESS SECTION (19" x 34")	\$3,562.00
AD2-SYS2-39	ADAPT 2 SERIES SYSTEM 2 PKG. INCLUDES 2 ROHO MATTRESS SECTIONS (19" x 34")	\$4,478.00
AD2-SYS3-39	ADAPT 2 SERIES SYSTEM 3 PKG. INCLUDES 3 ROHO MATTRESS SECTIONS (19" x 34")	\$5,451.00
AD2-SYS4-39	ADAPT 2 SERIES SYSTEM 4 PKG. INCLUDES 4 ROHO MATTRESS SECTIONS (19" x 34")	\$6,368.00
AD2-SYS5-39	ADAPT 2 SERIES SYSTEM 5 PKG. INCLUDES 2 ROHO MATTRESS SECTIONS (19" x 34")	\$4,478.00
UPGRADE	UPGRADE THE HIGH RESILIENCY FOAM INSERTS TO HYBRID FOAM	\$209.00
SUBSTITUTION <b>New!</b>	SWITCH ROHO MATTRESS SECTION TO VICAIR INLAY	\$0.00



System 1 AD2-SYS1-39	System 2 AD2-SYS2-39	System 3 AD2-SYS3-39	System 4 AD2-SYS4-39	System 5 AD2-SYS5-39
Foam base covered with Recovery 5	Foam base covered with Recovery 5	Foam base covered with Recovery 5	Foam base covered with Recovery 5	Foam base covered with Recovery 5
1 x ROHO mattress section (19" x 34")	2 x ROHO mattress sections (19" x 34")	3 x ROHO mattress sections (19" x 34")	4 x ROHO mattress sections (19" x 34")	2 x ROHO mattress sections (19" x 34")
1 x AD2-3033FS	1 x AD2-3033FS	1 x AD2-1933FS		1 x AD2-3033FS
1 x AD2-1933FS	1 x AD2-833FS			1 x AD2-833FS
1 x AD2-833FS				

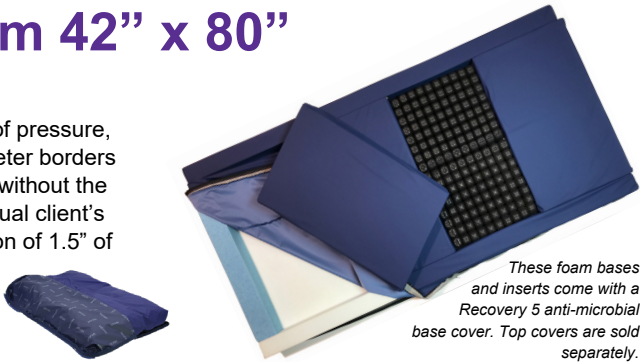
## Top cover options

Part Number	Description	Retail Price
AD2-TC3980	TOP COVER, ADAPT 2 39x80 (RECOVERY 5 FLUID-RESISTANCE, MULTI-WAY STRETCH, ZIPPERED)	\$504.00
AD2-TC3980-R5U	TOP COVER, ADAPT 2 39x80 (RECOVERY 5 ULTRA SUPERIOR FLUID-RESISTANCE, MULTI-WAY STRETCH, ZIPPERED)	\$626.00

See replacement inserts & covers on page 21

# Adapt 2 Series modular system 42" x 80"

The Adapt 2 mattress with SRT is an innovative way to reduce the effects of pressure, friction and shear within the body of the mattress. The 4.5" wide firm perimeter borders and 4" permanent gel foam foot border hold your choice of inserts in place without the need for snaps. The surface inserts can be configured based on the individual client's needs, and are the same size as the 39" insert options thanks to the addition of 1.5" of foam at each side border. **The removable top cover with its 360° zipper must be ordered separately.** **New!** Vicair mattress inlay sections with included low friction cover can also be added to Adapt 2 systems. Weight capacity: 350 lb



Part Number	Description	Retail Price
AD2-SYS1-42	ADAPT 2 SERIES SYSTEM 1 PKG. INCLUDES 1 ROHO MATTRESS SECTION (19" x 34") or VICAIR INLAY	\$3,793.00
AD2-SYS2-42	ADAPT 2 SERIES SYSTEM 2 PKG. INCLUDES 2 ROHO MATTRESS SECTIONS (19"x 34") or VICAIR INLAY	\$4,709.00
AD2-SYS3-42	ADAPT 2 SERIES SYSTEM 3 PKG. INCLUDES 3 ROHO MATTRESS SECTIONS (19" x 34") or VICAIR INLAY	\$5,682.00
AD2-SYS4-42	ADAPT 2 SERIES SYSTEM 4 PKG. INCLUDES 4 ROHO MATTRESS SECTIONS (19" x 34") or VICAIR INLAY	\$6,599.00
AD2-SYS5-42	ADAPT 2 SERIES SYSTEM 5 PKG. INCLUDES 2 ROHO MATTRESS SECTIONS (19" x 34") or VICAIR INLAY	\$4,709.00
UPGRADE	UPGRADE THE HIGH RESILIENCY FOAM INSERTS TO HYBRID FOAM	\$209.00
SUBSTITUTION <b>New!</b>	SWITCH ROHO MATTRESS SECTION TO VICAIR INLAY	\$0.00

<div>AD2-3033FS</div> <div>AD2-833FS</div> <div>AD2-1933FS</div>	<div>AD2-3033FS</div> <div>AD2-833FS</div> <div>AD2-833FS</div>	<div>AD2-1933FS</div> <div>AD2-1933FS</div> <div>AD2-1933FS</div>	<div>AD2-3033FS</div> <div>AD2-3033FS</div> <div>AD2-3033FS</div> <div>AD2-3033FS</div> <div>AD2-3033FS</div>	<div>AD2-3033FS</div> <div>AD2-833FS</div>
System 1 AD2-SYS1-42	System 2 AD2-SYS2-42	System 3 AD2-SYS3-42	System 4 AD2-SYS4-42	System 5 AD2-SYS5-42
Foam base covered with Recovery 5	Foam base covered with Recovery 5	Foam base covered with Recovery 5	Foam base covered with Recovery 5	Foam base covered with Recovery 5
1 x ROHO mattress section (19" x 34")	2 x ROHO mattress sections (19" x 34")	3 x ROHO mattress sections (19" x 34")	4 x ROHO mattress sections (19" x 34")	2 x ROHO mattress sections (19" x 34")
1 x AD2-3033FS	1 x AD2-3033FS	1 x AD2-1933FS		1 x AD2-3033FS
1 x AD2-1933FS	1 x AD2-833FS			1 x AD2-833FS
1 x AD2-833FS				

## Top cover options

Part Number	Description	Retail Price
AD2-TC4280	TOP COVER, ADAPT 2 42x80 (RECOVERY 5 FLUID-RESISTANCE, MULTI-WAY STRETCH, ZIPPERED)	\$602.00
AD2-TC4280-R5U	TOP COVER, ADAPT 2 42x80 (RECOVERY 5 ULTRA SUPERIOR FLUID-RESISTANCE, MULTI-WAY STRETCH, ZIPPERED)	\$723.00

See replacement inserts & covers on page 20

# Adapt 2 Series mattress bases & components

Size: 36" / 39" / 42" x 80", can be customized to any size (call for a quote). Insert options: foam or hybrid foam (flippable for longevity and ease of use and encased in Recovery 5 material), or ROHO® mattress section or Vicair® mattress inlay (with included low friction cover).

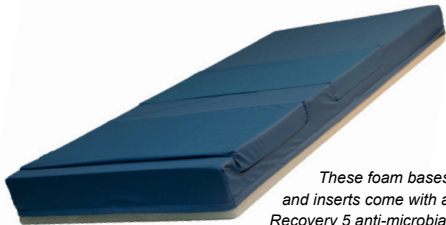
Top/Enclosure covers: **SOLD SEPARATELY**. The overall R5 top zippered cover provides extra incontinent protection. Or UPGRADE to the R5 Ultra top cover with 4-way stretch, is machine washable, and provides up to 6X more incontinent protection.

Part Number	Description	Retail Price
<b>AD2-BASE3680</b>	<b>36" x 80" x 6" BASE COVERED WITH RECOVERY 5</b>	<b>\$1,150.00</b>
<b>Hybrid Foam Inserts 30" Wide</b>		
AD2-830HS	8" x 30" HYBRID FOAM SECTION	\$272.00
AD2-1930HS	19" x 30" HYBRID FOAM SECTION	\$416.00
AD2-3030HS	30" x 30" HYBRID FOAM SECTION	\$520.00
<b>Foam Inserts 30" Wide</b>		
AD2-830FS	8" x 30" FOAM SECTION	\$194.00
AD2-1930FS	19" x 30" FOAM SECTION	\$307.00
AD2-3030FS	30" x 30" FOAM SECTION	\$370.00
<b>ROHO or Vicair Inserts</b>		
MATTSECT1610	19" x 30" ROHO NEOPRENE MATTRESS SECTION	\$1,171.00
ARM/INLAY/7548 <b>New!</b>	19" x 30" VICAIR MATTRESS INLAY SECTION w/ LOW FRICTION COVER	\$1,025.00
<b>Covers</b>		
AD2-TC3680	TOP COVER, ADAPT 2 36x80 (RECOVERY 5 FLUID-RESISTANCE, MULTI-WAY STRETCH, ZIPPERED)	\$424.00
AD2-TC3680-R5U	TOP COVER, ADAPT 2 36x80 (RECOVERY 5 ULTRA SUPERIOR FLUID-RESISTANCE, MULTI-WAY STRETCH, ZIPPERED)	\$546.00
AD2-BC3680	BASE COVER, ADAPT 2 36x80 (RECOVERY 5 FLUID-RESISTANCE, MULTI-WAY STRETCH)	\$485.00
COV-MATTSECT1610	FULL ENCLOSURE COVER, ROHO MATTSECT 19x30 (RECOVERY 5 FLUID-RESISTANCE, MULTI-WAY STRETCH)	\$207.00
COV-MATTSECT3400-R5U	FULL ENCLOSURE COVER, ROHO MATTSECT 19x34 (RECOVERY 5 ULTRA SUPERIOR FLUID-RESISTANCE, MULTI-WAY STRETCH)	\$288.00
<b>Note: the same inserts fit both the 39" and 42" width AD2 thanks to the 1.5" wider borders on the 42"</b>		
<b>AD2-BASE3980</b>	<b>39" x 80" x 6" BASE COVERED WITH RECOVERY 5</b>	<b>\$1,271.00</b>
<b>AD2-BASE4280</b>	<b>42" x 80" x 6" BASE COVERED WITH RECOVERY 5</b>	<b>\$1,856.00</b>
<b>Hybrid Foam Inserts 33" Wide</b>		
AD2-833HS	8" x 33" HYBRID FOAM SECTION	\$324.00
AD2-1933HS	19" x 33" HYBRID FOAM SECTION	\$520.00
AD2-3033HS	30" x 33" HYBRID FOAM SECTION	\$596.00
<b>Foam Inserts 33" Wide</b>		
AD2-833FS	8" x 33" FOAM SECTION	\$220.00
AD2-1933FS	19" x 33" FOAM SECTION	\$359.00
AD2-3033FS	30" x 33" FOAM SECTION	\$439.00
<b>ROHO or Vicair Inserts</b>		
MATTSECT3400	19" x 34" ROHO NEOPRENE MATTRESS SECTION	\$1,171.00
ARM/INLAY/9051 <b>New!</b>	20" x 36" VICAIR MATTRESS INLAY SECTION w/ LOW FRICTION COVER	\$1,025.00
<b>Covers</b>		
AD2-TC3980	TOP COVER, ADAPT 2 39x80 (RECOVERY 5 FLUID-RESISTANCE, MULTI-WAY STRETCH, ZIPPERED)	\$504.00
AD2-TC3980-R5U	TOP COVER, ADAPT 2 39x80 (RECOVERY 5 ULTRA SUPERIOR FLUID-RESISTANCE, MULTI-WAY STRETCH, ZIPPERED)	\$626.00
AD2-BC3980	BASE COVER, ADAPT 2 39x80 (RECOVERY 5 FLUID-RESISTANCE, MULTI-WAY STRETCH)	\$485.00
AD2-TC4280	TOP COVER, ADAPT 2 42x80 (RECOVERY 5 FLUID-RESISTANCE, MULTI-WAY STRETCH, ZIPPERED)	\$602.00
AD2-TC4280-R5U	TOP COVER, ADAPT 2 42x80 (RECOVERY 5 ULTRA SUPERIOR FLUID-RESISTANCE, MULTI-WAY STRETCH, ZIPPERED)	\$723.00
AD2-BC4280	BASE COVER, ADAPT 2 42x80 (RECOVERY 5 FLUID-RESISTANCE, MULTI-WAY STRETCH)	\$606.00
COV-MATTSECT3400	FULL ENCLOSURE COVER, ROHO MATTSECT 19x34 (RECOVERY 5 FLUID-RESISTANCE, MULTI-WAY STRETCH)	\$207.00
COV-MATTSECT3400-R5U	FULL ENCLOSURE COVER, ROHO MATTSECT 19x34 (RECOVERY 5 ULTRA SUPERIOR FLUID-RESISTANCE, MULTI-WAY STRETCH)	\$288.00

# Acute modular system 36" x 80"

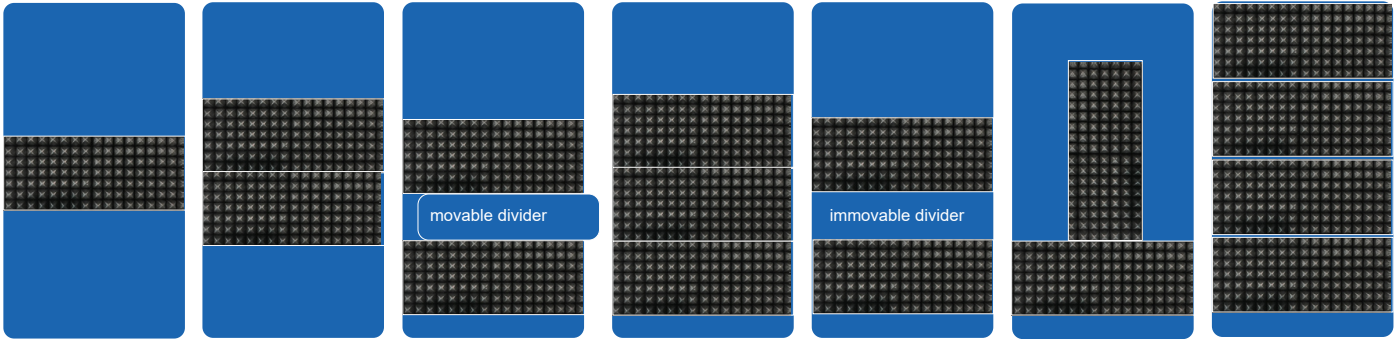
The Acute mattress is our high resiliency foam surface for the client at high risk of experiencing skin breakdown and may require the addition of ROHO® or Vicair® mattress sections. There are multiple configuration system options available to best meet their needs. **Overall top coverlet must be ordered separately.** Weight capacity: 350 lb

Size: 36" x 80", can be customized to any size (call for a quote)  
Insert options: foam or ROHO mattress section or Vicair inlay



These foam bases and inserts come with a Recovery 5 anti-microbial base cover. Top coverlets are sold separately.

Part Number	Description	Retail Price
AC-SYS1-PKG	ACUTE SYSTEM 1 PKG. INCLUDES 1 ROHO MATTRESS SECTION	\$2,310.00
AC-SYS2-PKG	ACUTE SYSTEM 2 PKG. INCLUDES 2 ROHO MATTRESS SECTIONS	\$3,639.00
AC-SYS3-PKG	ACUTE SYSTEM 3 PKG. INCLUDES 2 ROHO MATTRESS SECTIONS, MOVABLE DIVIDER	\$3,812.00
AC-SYS4-PKG	ACUTE SYSTEM 4 PKG. INCLUDES 3 ROHO MATTRESS SECTIONS	\$4,921.00
AC-SYS5-PKG	ACUTE SYSTEM 5 PKG. INCLUDES 2 ROHO MATTRESS SECTIONS, IMMOVABLE DIVIDER	\$3,650.00
AC-SYS6-PKG	ACUTE SYSTEM 6 PKG. INCLUDES 2 ROHO MATTRESS SECTIONS, T-SHAPE OPENING	\$3,968.00
AC-SYS7-PKG	ACUTE SYSTEM 7 PKG. INCLUDES 4 ROHO MATTRESS SECTIONS	\$5,495.00
SUBSTITUTION <b>New!</b>	SWITCH ROHO MATTRESS SECTION TO VICAIR INLAY	\$0.00



Acute system 1	Acute system 2	Acute system 3	Acute system 4	Acute system 5	Acute system 6	Acute system 7
Foam base covered with Recovery 5	Foam base covered with Recovery 5	Foam base covered with Recovery 5, movable divider included	Foam base covered with Recovery 5	Foam base covered with Recovery 5, immovable divider	Foam base covered with Recovery 5, T-shape opening	Foam base covered with Recovery 5
1 x ROHO mattress section (19" x 34")	2 x ROHO mattress sections (19" x 34")	2 x ROHO mattress sections (19" x 34")	3 x ROHO mattress sections (19" x 34")	2 x ROHO mattress sections (19" x 34")	2 x ROHO mattress sections (19" x 34")	4 x ROHO mattress sections (19" x 34")

## Top cover options

Part Number	Description	Retail Price
AC-COVERLET9	FITTED ELASTIC TOP COVER, 36x80x9 (RECOVERY 5 FLUID-RESISTANCE, MULTI-WAY STRETCH)	\$315.00
AC-COVERLET9-R5U	FITTED ELASTIC TOP COVER, 36x80x9 (RECOVERY 5 ULTRA SUPERIOR FLUID-RESISTANCE, MULTI-WAY STRETCH)	\$388.00

See replacement inserts & covers on page 23

# Acute mattress bases & components

Part Number	Description	Retail Price
AC-SYS1	ACUTE SYSTEM 1 - SECTIONAL BASE COVERED WITH RECOVERY 5 w/ 19" OPENING	\$1,039.00
AC-SYS2	ACUTE SYSTEM 2 - SECTIONAL BASE COVERED WITH RECOVERY 5 w/ 38" OPENING	\$1,098.00
AC-SYS3	ACUTE SYSTEM 3 - SECTIONAL BASE COVERED WITH RECOVERY 5 w/ TWO 19" OPENINGS, MOVABLE DIVIDER	\$1,259.00
AC-SYS4	ACUTE SYSTEM 4 - SECTIONAL BASE COVERED WITH RECOVERY 5 w/ 57" OPENING	\$1,098.00
AC-SYS5	ACUTE SYSTEM 5 - SECTIONAL BASE COVERED WITH RECOVERY 5 w/ TWO 19" OPENINGS	\$1,098.00
AC-SYS6	ACUTE SYSTEM 6 - SECTIONAL BASE COVERED WITH RECOVERY 5 w/ TWO 19" OPENINGS (T-SHAPE)	\$1,418.00
AC-SYS7	ACUTE SYSTEM 7 - SECTIONAL BASE COVERED WITH RECOVERY 5 w/ 76" OPENING	\$972.00
<b>Inserts</b>		
AC-FI	ACUTE - FOAM INSERT 19" x 34"	\$265.00
MATTSECT3400	ROHO NEOPRENE MATTRESS SECTION 19" x 34"	\$1,171.00
ARM/INLAY/9051 <b>New!</b>	VICAIR MATTRESS INLAY SECTION 20" x 36"	\$1,025.00
<b>Covers</b>		
AC-COVERLET9	FITTED ELASTIC TOP COVER, 36x80x9 (RECOVERY 5 FLUID-RESISTANCE, MULTI-WAY STRETCH)	\$315.00
AC-COVERLET9-R5U	FITTED ELASTIC TOP COVER, 36x80x9 (RECOVERY 5 ULTRA SUPERIOR FLUID-RESISTANCE, MULTI-WAY STRETCH)	\$388.00
AC-BC3680	BASE COVER, ACUTE SYSTEM (RECOVERY 5 FLUID-RESISTANCE, MULTI-WAY STRETCH) *SPECIFY SYSTEM NUMBER	\$388.00
COV-MATTSECT3400	FULL ENCLOSURE COVER, ROHO MATTSECT 19x34 (RECOVERY 5 FLUID-RESISTANCE, MULTI-WAY STRETCH)	\$207.00
COV-MATTSECT3400-R5U	FULL ENCLOSURE COVER, ROHO MATTSECT 19x34 (RECOVERY 5 ULTRA SUPERIOR FLUID-RESISTANCE, MULTI-WAY STRETCH)	\$288.00

## Gap fillers

Foam gap fillers with Recovery 5 covers are available in a variety of 6" and 8" heights to be used to lengthen the sleep surface of your mattress to meet your client's specific needs.

Part Number	Description	Retail Price
GF36-6-4	4" GAP FILLER x 36" WIDE x 6" HIGH	\$126.00
GF36-8-4	4" GAP FILLER x 36" WIDE x 8" HIGH	\$126.00
GF39-6-4	4" GAP FILLER x 39" WIDE x 6" HIGH	\$132.00
GF42-6-4	4" GAP FILLER x 42" WIDE x 6" HIGH	\$137.00
GF42-8-4	4" GAP FILLER x 42" WIDE x 8" HIGH	\$137.00
GF48-6-4	4" GAP FILLER x 48" WIDE x 6" HIGH	\$153.00
GF48-8-4	4" GAP FILLER x 48" WIDE x 8" HIGH	\$153.00



# ROHO mattress overlays



From left to right: Prodigy®, SOFFLEX 2®, and ROHO® Dry Floatation®

## At a glance

- Provides skin/soft tissue protection
- Adjustable to client's shape and weight, and to changes in position over time
- Accommodates other positioning devices beneath the overlay
- Can be reused with multiple individuals
- Provides immersion and envelopment
- Sections can be easily cleaned and disinfected
- Two-piece enclosure cover
- Maximum client weight of up to 300 lb for Prodigy, 330 lb for SOFFLEX 2, and no weight limit for ROHO Dry Floatation

These three mattress overlays are non-powered, air-filled, adjustable, zoned, reactive, full support surfaces that are intended to conform to an individual's shape to provide skin/soft tissue and deep tissue injury protection and an environment to facilitate wound healing. Flexible, interconnected air cells can be adjusted to match the individual's body contours and changing needs.

The first two are made of durable polyvinyl and comprise of three sections (27" long) to make an overlay that is 81" long, while the last one is made of neoprene and has four sections (19" long) for a 76" long overlay. As you compare the Prodigy, SOFFLEX 2, and ROHO DRY FLOATATION mattress overlays, you also see an increasing number of air cells.

With 720 air cells, the ROHO DRY FLOATATION neoprene mattress overlay allows for even greater conformity and better pressure distribution. Each cell is specially treated to minimize friction and resulting shear, and bariatric kit add-on sections are available to widen the overlay. Drainage holes in the base of the mattress overlay also allows for moisture to drain away from the body. The performance, efficiency and quality of this overlay system are unequaled in the industry.

Covers: The Prodigy & SOFFLEX 2 both use a two-piece zippered enclosure cover. It allows for the removal of the top portion for ease of cleaning if needed without removing the entire product from the bed mattress.

The ROHO neoprene mattress enclosure cover is also comprised of two pieces, but is also water-resistant, flame-retardant, and made of anti-microbial fabric that can be easily cleaned and/or disinfected. Attached straps allow the cover to be secured to a standard single bed mattress. Carrying handles allow for ease of transport of product.

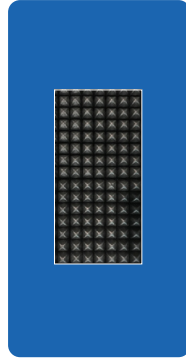
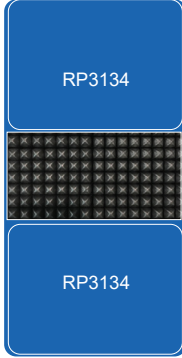
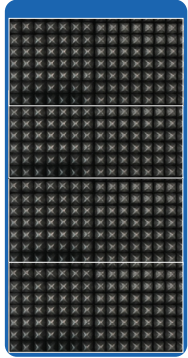


Part Number	Description	Retail Price
3800-1	PRODIGY SINGLE SECTION (27" x 35"); NEED 3 FOR FULL-SIZE OVERLAY; 300 LB WT CAP.	\$198.00
SFLX2EA	SOFFLEX 2 SINGLE SECTION (27" x 35"); NEED 3 FOR FULL-SIZE OVERLAY; 330 LB WT CAP.	\$732.00
MATTSECT3400	ROHO NEOPRENE MATTRESS SINGLE SECTION (19" x 34"); NEED 4 FOR FULL-SIZE OVERLAY; NO WT CAP.	\$1,171.00
MATTSECTBARI	NEOPRENE SECTION W/ SNAPS FOR BARI ADD-ON (19" x 34"); XXX LB WT CAP.	\$1,226.00
BARI310EA	BARIATRIC MATTRESS KIT, SINGLE SECTION (3 x 10 CELLS)	\$480.00
BARI310SET	BARIATRIC MATTRESS KIT SYSTEM, FOUR SECTIONS (3 x 10 CELLS)	\$1,839.00
BARI410EA	BARIATRIC MATTRESS KIT, SINGLE SECTION (4 x 10 CELLS)	\$480.00
BARI410SET	BARIATRIC MATTRESS KIT SYSTEM, FOUR SECTIONS (4 x 10 CELLS)	\$1,839.00
Covers		
COV-MR2PCSTD-P	2-PIECE ENCLOSURE COVER (36" x 81.75") FOR PRODIGY & SOFFLEX 2	\$343.00
6162M	2-PIECE ENCLOSURE INCONTINENT COVER (34" x 76") FOR ROHO NEOPRENE MATTRESS OVERLAY	\$343.00

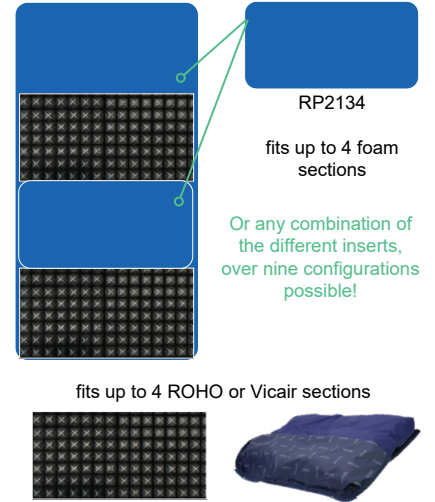
# Leveling pads

By using a combination of leveling pads and ROHO® or Vicair® mattress sections to make an overlay, a high degree of pressure redistribution can be maintained. The pads are made with a high resiliency and stable foam base, and offer comfort and support. Simply mix and match the four sections to best suit your needs! Weight capacity: 250 lb/piece

Below are three additional options using air-filled mattress sections.



Option 1	Option 2	Option 3
fits 4 ROHO or Vicair sections	fits 1 ROHO or Vicair section	RP3480 (foam with precut centre)
	2 x RP3134	fits 1 ROHO or Vicair section



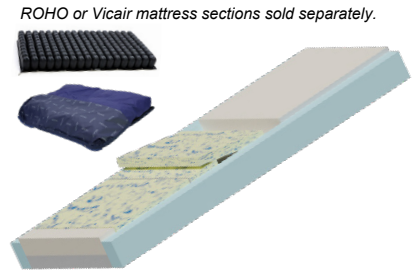
Part Number	Description	Retail Price
RP-2134	FOAM LEVELING PAD 21" x 34"	\$368.00
RP-3134	FOAM LEVELING PAD 31" x 34"	\$357.00
RP-3480	FOAM LEVELING PAD 34" x 80" WITH PRECUT CENTRE	\$614.00
MATTSECT3400	ROHO NEOPRENE MATTRESS SECTION 19" x 34"	\$1,171.00
UL3680	3" OVERLAY BASE WITH NYLON COVER; 36" x 80"	\$364.00
ARM/INLAY/9051 <b>New!</b>	VICAIR MATTRESS INLAY SECTION 20" x 36"	\$1,025.00
<b>Covers</b>		
AC-COVERLET3	FITTED ELASTIC TOP COVER, 36x80x3 (RECOVERY 5 FLUID-RESISTANCE, MULTI-WAY STRETCH)	\$315.00
AC-COVERLET3-R5U	FITTED ELASTIC TOP COVER, 36x80x3 (RECOVERY 5 ULTRA SUPERIOR FLUID-RESISTANCE, MULTI-WAY STRETCH)	\$388.00
COV-MATTSECT3400	FULL ENCLOSURE COVER, ROHO MATTSECT 19x34 (RECOVERY 5 FLUID-RESISTANCE, MULTI-WAY STRETCH)	\$207.00
COV-MATTSECT3400-R5U	FULL ENCLOSURE COVER, ROHO MATTSECT 19x34 (RECOVERY 5 ULTRA SUPERIOR FLUID-RESISTANCE, MULTI-WAY STRETCH)	\$288.00

# Mattresses

# Adapt mattress



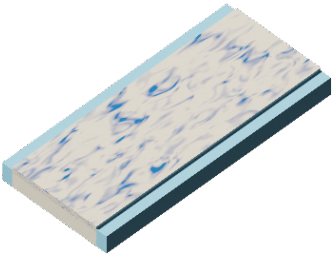
The Adapt modifiable foam surface with SRT addresses shearing forces present during client movement in bed or when raising the head or foot section of the bed, at the same time ensuring proper pressure redistribution. This mattress comes complete with three removable Gel swirl foam inserts, but allows for the addition of up to two Vicair® or ROHO® air mattress sections (sold separately). It comes with a firm head section for support, soft heel and mid sections, firm borders, a raised sleep surface, and full enclosure cover with a Recovery 5 top. Upgrade the mattress with a raised bolster or R5 Ultra cover (see below). **Note:** Custom sizes available, please call for details.



Part Number	Description	Retail Price
AD3680	ADAPT w/ SRT, 36" x 80" x 7" w/ R5 TOP COVER; 350 LB WT CAP.	\$1,572.00
AD3684	ADAPT w/ SRT, 36" x 84" x 7" w/ R5 TOP COVER; 350 LB WT CAP.	\$1,693.00
AD3980	ADAPT w/ SRT, 39" x 80" x 7" w/ R5 TOP COVER; 350 LB WT CAP.	\$1,693.00
AD4280	ADAPT w/ SRT, 42" x 80" x 7" w/ R5 TOP COVER; 500 LB WT CAP.	\$1,815.00
AD4284	ADAPT w/ SRT, 42" x 84" x 7" w/ R5 TOP COVER; 500 LB WT CAP.	\$1,936.00
AD4880	ADAPT w/ SRT, 48" x 80" x 7" w/ R5 TOP COVER; 500 LB WT CAP.	\$2,057.00
AD5480	ADAPT w/ SRT, 54" x 80" x 7" w/ R5 TOP COVER; 500 LB WT CAP.	\$2,178.00
AD6080	ADAPT w/ SRT, 60" x 80" x 7" w/ R5 TOP COVER; 500 LB WT CAP.	\$2,300.00
<b>Other</b>		
ARM/INLAY/7548 <b>New!</b>	19" x 30" VICAIR MATTRESS INLAY SECTION w/ COVER (FOR 36" WIDE MATTRESSES)	\$1,025.00
ARM/INLAY/9051 <b>New!</b>	20" x 36" VICAIR MATTRESS INLAY SECTION w/ COVER (FOR ALL OTHER MATTRESSES)	\$1,025.00
MATTSECT1610	19" x 30" ROHO NEOPRENE MATTRESS SECTION (FOR 36" WIDE MATTRESSES)	\$1,171.00
MATTSECT3400	19" x 34" ROHO NEOPRENE MATTRESS SECTION (FOR ALL OTHER MATTRESSES)	\$1,171.00
RB-UPGRADE	CUSTOM*RAISED BOLSTER UPGRADE FOR ANY MATTRESS SIZE; MINIMUM QUANTITY ORDER OF FIVE OF THE <u>SAME SIZE</u> (EVEN WITH A MIX OF ADAPT/ALLAY/ALIGN)	\$220.00
R5U-UPGRADE	ENHANCE THE COVER WITH R5 ULTRA FOR MAXIMUM INCONTINENCE PROTECTION	\$110.00

\*These systems are custom and made to order. They are non-refundable and non-exchangeable.

# Allay mattress



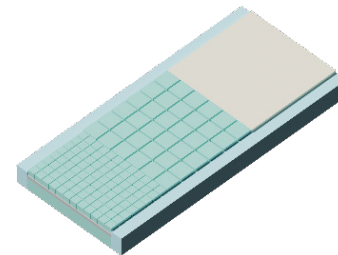
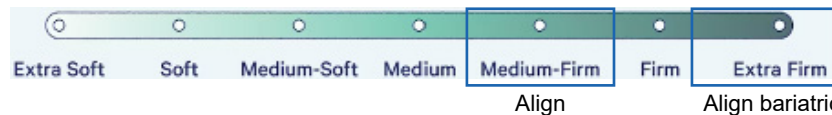
The Allay Gel swirl foam replacement surface with SRT is our premium option for the client wanting optimal pressure redistribution and comfort. The cooling benefit of the gel-infused Visco foam top combined with a supportive core make this the best option for users not requiring ROHO air mattress sections. It is reversible, has firm borders, a raised sleep surface, and full enclosure cover with a Recovery 5 top. Upgrade the mattress with a raised bolster or R5 Ultra cover (see below). **Note:** Custom sizes available, please call for details.

Part Number	Description	Retail Price
AL3680	ALLAY w/ SRT, 36" x 80" x 7" w/ R5 TOP COVER; 350 LB WT CAP.	\$1,503.00
AL3684	ALLAY w/ SRT, 36" x 84" x 7" w/ R5 TOP COVER; 350 LB WT CAP.	\$1,707.00
AL3980	ALLAY w/ SRT, 39" x 80" x 7" w/ R5 TOP COVER; 350 LB WT CAP.	\$1,641.00
AL4280	ALLAY w/ SRT, 42" x 80" x 7" w/ R5 TOP COVER; 500 LB WT CAP.	\$1,776.00
AL4284	ALLAY w/ SRT, 42" x 84" x 7" w/ R5 TOP COVER; 500 LB WT CAP.	\$1,943.00
AL4880	ALLAY w/ SRT, 48" x 80" x 7" w/ R5 TOP COVER; 500 LB WT CAP.	\$2,050.00
AL5480	ALLAY w/ SRT, 54" x 80" x 7" w/ R5 TOP COVER; 500 LB WT CAP.	\$2,188.00
AL6080	ALLAY w/ SRT, 60" x 80" x 7" w/ R5 TOP COVER; 500 LB WT CAP.	\$2,324.00
Other		
RB-UPGRADE	CUSTOM* RAISED BOLSTER UPGRADE FOR ANY MATTRESS SIZE; MINIMUM QUANTITY ORDER OF FIVE OF THE SAME SIZE (EVEN WITH A MIX OF ADAPT/ALLAY/ALIGN)	\$220.00
R5U-UPGRADE	ENHANCE THE COVER WITH R5 ULTRA FOR MAXIMUM INCONTINENCE PROTECTION	\$110.00

\*These systems are custom and made to order. They are non-refundable and non-exchangeable.



# Align mattress & Align Bariatric



The Align surface with SRT comes with firm borders, a raised sleep surface, and full enclosure cover with a Recovery 5 top. It is a unique multi-zone surface that provides differing immersion and envelopment levels that match the contours of the body. There is one piece of HR foam at the torso, with 4" square cuts in the foam under the sacrum, and 2" square cuts under the heels to release the surface tension. The foam density and weight capacity are the differences for our Align & Align Bariatric options. Upgrade the mattress with a raised bolster or R5 Ultra cover (see below).

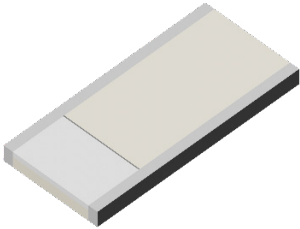
**Note:** Custom sizes available, please call for details.

Part Number	Description	Retail Price
A3680	ALIGN w/ SRT - HR FOAM, 36" x 80" x 7" w/ R5 TOP COVER; 350 LB WT CAP.	\$1,250.00
A3684	ALIGN w/ SRT - HR FOAM, 36" x 84" x 7" w/ R5 TOP COVER; 350 LB WT CAP.	\$1,451.00
A3980	ALIGN w/ SRT - HR FOAM, 39" x 80" x 7" w/ R5 TOP COVER; 350 LB WT CAP.	\$1,390.00
A4280	ALIGN w/ SRT - HR FOAM, 42" x 80" x 7" w/ R5 TOP COVER; 500 LB WT CAP.	\$1,529.00
A4284	ALIGN w/ SRT - HR FOAM, 42" x 84" x 7" w/ R5 TOP COVER; 500 LB WT CAP.	\$1,693.00
A4880	ALIGN w/ SRT - HR FOAM, 48" x 80" x 7" w/ R5 TOP COVER; 500 LB WT CAP.	\$1,808.00
A5480	ALIGN w/ SRT - HR FOAM, 54" x 80" x 7" w/ R5 TOP COVER; 500 LB WT CAP.	\$1,948.00
A6080	ALIGN w/ SRT - HR FOAM, 60" x 80" x 7" w/ R5 TOP COVER; 500 LB WT CAP.	\$2,087.00
<b>Other</b>		
RB-UPGRADE	CUSTOM* RAISED BOLSTER UPGRADE FOR ANY MATTRESS SIZE; MINIMUM QUANTITY ORDER OF FIVE OF THE <u>SAME SIZE</u> (EVEN WITH A MIX OF ADAPT/ALLAY/ALIGN)	\$220.00
R5U-UPGRADE	ENHANCE THE COVER WITH R5 ULTRA FOR MAXIMUM INCONTINENCE PROTECTION	\$110.00

<b>BARIATRIC</b>		
A3680B	BARIATRIC HIGH DENSITY FOAM w/ SRT, 36" x 80" x 7" w/ R5 TOP COVER; 600 LB WT CAP.	\$1,330.00
A3980B	BARIATRIC HIGH DENSITY FOAM w/ SRT, 39" x 80" x 7" w/ R5 TOP COVER; 600 LB WT CAP.	\$1,451.00
A4280B	BARIATRIC HIGH DENSITY FOAM w/ SRT, 42" x 80" x 7" w/ R5 TOP COVER; 600 LB WT CAP.	\$1,572.00
A4880B	BARIATRIC HIGH DENSITY FOAM w/ SRT, 48" x 80" x 7" w/ R5 TOP COVER; 800 LB WT CAP.	\$1,693.00
A5480B	BARIATRIC HIGH DENSITY FOAM w/ SRT, 54" x 80" x 7" w/ R5 TOP COVER; 800 LB WT CAP.	\$1,815.00
A6080B	BARIATRIC HIGH DENSITY FOAM w/ SRT, 60" x 80" x 7" w/ R5 TOP COVER; 800 LB WT CAP.	\$1,936.00
<b>Other</b>		
RB-UPGRADE	CUSTOM* RAISED BOLSTER UPGRADE FOR ANY MATTRESS SIZE; MINIMUM QUANTITY ORDER OF FIVE OF THE <u>SAME SIZE</u> (EVEN WITH A MIX OF ADAPT/ALLAY/ALIGN)	\$220.00
R5U-UPGRADE	ENHANCE THE COVER WITH R5 ULTRA FOR MAXIMUM INCONTINENCE PROTECTION	\$110.00

\*These systems are custom and made to order. They are non-refundable and non-exchangeable.

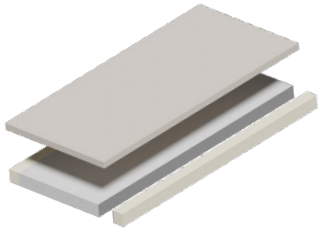
## Sömn mattress



Sömn is a premium mattress ideal for long-term care with their 3" wide transfer edges on both sides that help reduce the risk of falls, and for keeping the client in a central position. This layered foam surface is our firmer option with a 4" base layer and 2" top layer with a Serene™ foam section at the heel. Sömn comes with fluid-resistant Startex full enclosure cover.

Part Number	Description	Retail Price
SOMN3680	SÖMN, 36" x 80" x 6" w/ STARTEX COVER; 350 LB WT CAP.	\$923.00
SOMN3980	SÖMN, 39" x 80" x 6" w/ STARTEX COVER; 350 LB WT CAP.	\$1,097.00
SOMN4280	SÖMN, 42" x 80" x 6" w/ STARTEX COVER; 500 LB WT CAP.	\$1,154.00
SOMN4880	SÖMN, 48" x 80" x 6" w/ STARTEX COVER; 500 LB WT CAP.	\$1,212.00

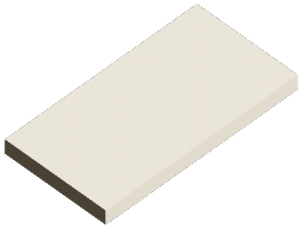
## Koppla mattress



Koppla is a premium mattress ideal for long-term care with their 3" wide transfer edges on both sides that help reduce the risk of falls, and for keeping the client in a central position. This layered foam surface is our softest option with a 4" base layer, plus a 2" overall top layer of Serene™ foam that also covers the transfer edges. Koppla comes with fluid-resistant Startex full enclosure cover.

Part Number	Description	Retail Price
KOPPLA3680	KOPPLA, 36" x 80" x 6" w/ STARTEX COVER; 350 LB WT CAP.	\$1,097.00
KOPPLA3980	KOPPLA, 39" x 80" x 6" w/ STARTEX COVER; 350 LB WT CAP.	\$1,270.00
KOPPLA4280	KOPPLA, 42" x 80" x 6" w/ STARTEX COVER; 350 LB WT CAP.	\$1,328.00
KOPPLA4880	KOPPLA, 48" x 80" x 6" w/ STARTEX COVER; 500 LB WT CAP.	\$1,385.00

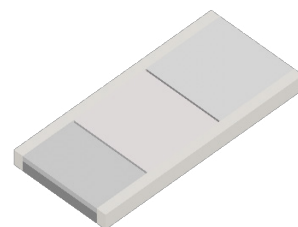
## Optima 2 mattress



Optima 2 mattresses focus on comfort, safety, durability, and budget. They come with a waterproof nylon cover and a foam core constructed of 100% medical grade environmentally friendly non-allergenic foam. Mattress is reversible for longer product life.

Part Number	Description	Retail Price
OPT2-3680	OPTIMA 2, 36" x 80" x 6" w/ NYLON TOP COVER; 350 LB WT CAP.	\$472.00
OPT2-3980	OPTIMA 2, 39" x 80" x 6" w/ NYLON TOP COVER; 350 LB WT CAP.	\$629.00
OPT2-4280	OPTIMA 2 XT, 42" x 80" x 6" w/ NYLON TOP COVER; 500 LB WT CAP.	\$703.00
OPT2-4880	OPTIMA 2 XT, 48" x 80" x 6" w/ NYLON TOP COVER; 500 LB WT CAP.	\$818.00

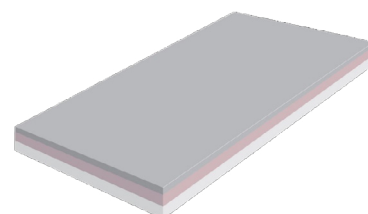
## Symmetry mattress



Symmetry is a multi-zone surface with three distinct areas with a softer foam at the heel to promote immersion. It also includes firm side borders for secure transfers in/out of bed, and for keeping the client in a central position. Symmetry has a multi-way stretch, fluid-resistant cover which provides incontinent protection. **Note:** Fully waterproof nylon cover option now available.

Part Number	Description	Retail Price
SYM-3680	SYMMETRY, 36" x 80" x 6" w/ FLUID-RESISTANT TOP COVER & FIRM BORDERS; 350 LB WT CAP.	\$671.00
SYM-3980	SYMMETRY, 39" x 80" x 6" w/ FLUID-RESISTANT TOP COVER & FIRM BORDERS; 350 LB WT CAP.	\$808.00
SYM-4280	SYMMETRY XT, 42" x 80" x 6" w/ FLUID-RESISTANT TOP COVER & FIRM BORDERS; 500 LB WT CAP.	\$881.00
SYM-4880	SYMMETRY XT, 48" x 80" x 6" w/ FLUID-RESISTANT TOP COVER & FIRM BORDERS; 500 LB WT CAP.	\$986.00

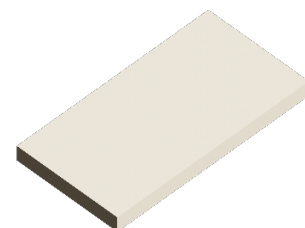
## Allieve HD mattress



The Allieve HD bariatric surface combines high-density foam with a multi-layer design to provide excellent immersion. Complete with a R5 cover and up to 750lb capacity this surface will ensure optimal comfort. 2.5lb foam constructed to be reversible, the Allieve HD is an excellent choice for the capital investment or individual client.

Part Number	Description	Retail Price
AHD4280	ALLIEVE HD MATTRESS 42X80X6 W/R5 COVER & 750LB CAPACITY	\$1,425.00
AHD4284	ALLIEVE HD MATTRESS 42X84X6 W/R5 COVER & 750LB CAPACITY	\$1,595.00
AHD4880	ALLIEVE HD MATTRESS 48X80X6 W/R5 COVER & 750LB CAPACITY	\$1,625.00
AHD4884	ALLIEVE HD MATTRESS 48X84X6 W/R5 COVER & 750LB CAPACITY	\$1,795.00

## Apollo mattress



The Apollo no-zip surface is designed for the client that requires the cover to completely encapsulate the mattress. It is constructed of high-density foam, fully flippable and reversible, covered with our Hercules fabric, and fire retardant cover. The Apollo is welded closed to ensure zero access to the foam, providing a safe, long-term solution for your client or facility.

Part Number	Description	Retail Price
AP3680	APOLLO BEHAVIOURAL MATTRESS 36x80x6 W/ NO-ZIP HERCULES COVER	\$789

## Mattress replacement covers

Recovery 5 and Recovery 5 Ultra replacement enclosure covers with handles, including the new high-strength Hercules base cover, for **Adapt, Allay, and Align** mattresses. Custom sizes are available. If ordering a custom raised bolster mattress, specialized raised bolster covers are available.



Raised bolster Recovery 5 cover shown above.

Part Number	Description	Retail Price
COV-REPL3680	FULL ENCLOSURE COVER, ADAPT/ALLAY/ALIGN 36x80 (RECOVERY 5 FLUID-RESISTANCE, MULTI-WAY STRETCH)	\$534.00
COV-REPL3684	FULL ENCLOSURE COVER, ADAPT/ALLAY/ALIGN 36x84 (RECOVERY 5 FLUID-RESISTANCE, MULTI-WAY STRETCH)	\$541.00
COV-REPL3980	FULL ENCLOSURE COVER, ADAPT/ALLAY/ALIGN 39x80 (RECOVERY 5 FLUID-RESISTANCE, MULTI-WAY STRETCH)	\$602.00
COV-REPL4280	FULL ENCLOSURE COVER, ADAPT/ALLAY/ALIGN 42x80 (RECOVERY 5 FLUID-RESISTANCE, MULTI-WAY STRETCH)	\$602.00
COV-REPL4284	FULL ENCLOSURE COVER, ADAPT/ALLAY/ALIGN 42x84 (RECOVERY 5 FLUID-RESISTANCE, MULTI-WAY STRETCH)	\$662.00
COV-REPL4880	FULL ENCLOSURE COVER, ADAPT/ALLAY/ALIGN 48x80 (RECOVERY 5 FLUID-RESISTANCE, MULTI-WAY STRETCH)	\$602.00
COV-REPL5480	FULL ENCLOSURE COVER, ADAPT/ALLAY/ALIGN 54x80 (RECOVERY 5 FLUID-RESISTANCE, MULTI-WAY STRETCH)	\$657.00
COV-REPL6080	FULL ENCLOSURE COVER, ADAPT/ALLAY/ALIGN 60x80 (RECOVERY 5 FLUID-RESISTANCE, MULTI-WAY STRETCH)	\$657.00
Recovery 5 Ultra		
COV-REPL3680-R5U	FULL ENCLOSURE COVER, ADAPT/ALLAY/ALIGN 36x80 (RECOVERY 5 ULTRA SUPERIOR FLUID-RESISTANCE, MULTI-WAY STRETCH)	\$602.00
COV-REPL3684-R5U	FULL ENCLOSURE COVER, ADAPT/ALLAY/ALIGN 36x84 (RECOVERY 5 ULTRA SUPERIOR FLUID-RESISTANCE, MULTI-WAY STRETCH)	\$662.00
COV-REPL3980-R5U	FULL ENCLOSURE COVER, ADAPT/ALLAY/ALIGN 39x80 (RECOVERY 5 ULTRA SUPERIOR FLUID-RESISTANCE, MULTI-WAY STRETCH)	\$723.00
COV-REPL4280-R5U	FULL ENCLOSURE COVER, ADAPT/ALLAY/ALIGN 42x80 (RECOVERY 5 ULTRA SUPERIOR FLUID-RESISTANCE, MULTI-WAY STRETCH)	\$723.00
COV-REPL4284-R5U	FULL ENCLOSURE COVER, ADAPT/ALLAY/ALIGN 42x84 (RECOVERY 5 ULTRA SUPERIOR FLUID-RESISTANCE, MULTI-WAY STRETCH)	\$723.00
COV-REPL4880-R5U	FULL ENCLOSURE COVER, ADAPT/ALLAY/ALIGN 48x80 (RECOVERY 5 ULTRA SUPERIOR FLUID-RESISTANCE, MULTI-WAY STRETCH)	\$723.00
COV-REPL5480-R5U	FULL ENCLOSURE COVER, ADAPT/ALLAY/ALIGN 54x80 (RECOVERY 5 ULTRA SUPERIOR FLUID-RESISTANCE, MULTI-WAY STRETCH)	\$784.00
COV-REPL6080-R5U	FULL ENCLOSURE COVER, ADAPT/ALLAY/ALIGN 60x80 (RECOVERY 5 ULTRA SUPERIOR FLUID-RESISTANCE, MULTI-WAY STRETCH)	\$784.00

Replacement enclosure covers with handles, including the new high-strength Hercules base cover, for **Sömn, Koppla, Optima 2, and Symmetry** mattresses.

Part Number	Description	Retail Price
COV-REPL3680-STX	FULL ENCLOSURE COVER, SOMN/KOPPLA 36x80 (STARTEX, FLUID-RESISTANT, MULTI-WAY STRETCH)	\$551.00
COV-REPL3980-STX	FULL ENCLOSURE COVER, SOMN/KOPPLA 39x80 (STARTEX, FLUID-RESISTANT, MULTI-WAY STRETCH)	\$584.00
COV-REPL4280-STX	FULL ENCLOSURE COVER, SOMN/KOPPLA 42x80 (STARTEX, FLUID-RESISTANT, MULTI-WAY STRETCH)	\$606.00
COV-REPL4880-STX	FULL ENCLOSURE COVER, SOMN/KOPPLA 48x80 (STARTEX, FLUID-RESISTANT, MULTI-WAY STRETCH)	\$628.00
COV-REPL3680-OPT2	FULL ENCLOSURE COVER, OPTIMA 2 36x80 (NYLON, WATERPROOF)	\$198.00
COV-REPL3980-OPT2	FULL ENCLOSURE COVER, OPTIMA 2 39x80 (NYLON, WATERPROOF)	\$231.00
COV-REPL4280-OPT2	FULL ENCLOSURE COVER, OPTIMA 2 42x80 (NYLON, WATERPROOF)	\$264.00
COV-REPL4880-OPT2	FULL ENCLOSURE COVER, OPTIMA 2 48x80 (NYLON, WATERPROOF)	\$298.00
COV-REPL3680-SYM	FULL ENCLOSURE COVER, SYMMETRY 36x80 (FLUID-RESISTANT, MULTI-WAY STRETCH)	\$276.00
COV-REPL3980-SYM	FULL ENCLOSURE COVER, SYMMETRY 39x80 (FLUID-RESISTANT, MULTI-WAY STRETCH)	\$308.00
COV-REPL4280-SYM	FULL ENCLOSURE COVER, SYMMETRY 42x80 (FLUID-RESISTANT, MULTI-WAY STRETCH)	\$342.00
COV-REPL4880-SYM	FULL ENCLOSURE COVER, SYMMETRY 48x80 (FLUID-RESISTANT, MULTI-WAY STRETCH)	\$374.00

## Overbed tables

Two new options for overbed tables! Each includes a rubberized border to reduce spillage, a powder-coated metal stand with adjustable height, and two locking castors.

**Tilting table** (far right) has a high-density laminate top that measures 16" x 24" and the pivot stops at 15°/30°/45°/90°. It comes fully assembled and the base is foldable for storage under the bed. Table has a max height of 37" and a minimum height of 25".

**Composite table** has an injection-molded top that measures 16" x 30" and includes a built-in cupholder. Automatic one-touch height adjustments to a max height of 42" and a minimum height of 30". Comes flat packed with tools and hardware for assembly.



Part Number	Description	Retail Price
UNITYTILTOV	TILTING OVERBED TABLE WITH HIGH-DENSITY LAMINATE TOP	\$230.00
UNITYCOMPOV	COMPOSITE OVERBED TABLE WITH CUPHOLDER	\$230.00

## Halo Wing

The Halo Wing helps eliminate the four most dangerous entrapment zones creating a safe bed system environment. It can be used as a side rail replacement, for transferring or movement in bed, and preventing bed rollouts and falls. It exceeds the compressibility of mattress and 2 1/3" gap space along with the 60" exit point for Zones 2, 3, and 4.

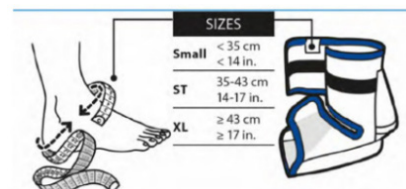
Can be used on Tröst beds and comes with a lifetime warranty.



Part Number	Description	Retail Price
77701	HALO SAFETY WING, SINGLE MOUNT	\$804.00
77702	HALO SAFETY WING, DOUBLE MOUNT	\$1,000.00

## MAXXcare Heel Pro Evolution

The Maxxcare Heel Pro Evolution is comfortable and stable and helps protect against pressure injuries and shear forces. The mechanically strong air tubes allow the user to walk short distances while wearing the Heel Pro Evolution to promote increased mobility. It supports wound healing and is 100% washable

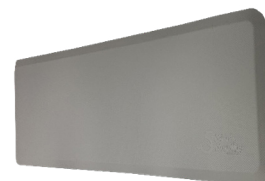


Part Number	Description	Retail Price
HP/SMALL <b>New!</b>	MAXXCARE HEEL PRO EVOLUTION HEEL PROTECTOR; SIZE SMALL; <14"	\$175.00
HP/STANDARD <b>New!</b>	MAXXCARE HEEL PRO EVOLUTION HEEL PROTECTOR; SIZE STANDARD; 14"-17"	\$175.00
HP/XL <b>New!</b>	MAXXCARE HEEL PRO EVOLUTION HEEL PROTECTOR; SIZE XL; >17"	\$175.00

## FallMats

The Fall Mat is a strong and resilient injury mitigation mat designed to provide protection beside the bed and reduce the impact during a fall event.

The Fall Mat passes a 10' Egg Drop Test whereby an egg is dropped from 10' above the mat without damage.



### Features

- **72" length** – full bed length protection.
- **Strong and Resilient** – polyurethane foam inner core to provides maximum shock absorption.
- **Low profile with tapered edges** – does not impede access to the bed and minimizes the tripping hazard.
- **Anti-slip bottom** – does not move on tiles, carpet, or vinyl flooring.
- **Textured top** – increases surface traction
- **Easy to clean** - can be wiped with soap and water, or hospital grade cleaners.

Part Number	Description	Retail Price
FALLMATT	FALL MATT W/HIGH DENSITY FOAM COVERED WITH VINYL, NON-SLIP BOTTOM, X1FOLDABLE; 24" X 72" X.75"	\$249.00



# Specifications & warranties

- Weight capacity:** 350 lb for standard sizes; 600 lb for bariatric; unless otherwise specified
- Permobil mattresses & modular systems:** 2 year limited warranty; unless otherwise specified
- 5 Minds Mobility mattresses/surfaces:** 2 year limited warranty on foam mattresses
- ROHO® mattress sections & overlays:** Prodigy (1 year), SOFFLEX 2 (18 months), mattress sections/overlay (2 years)
- Vicair® mattress sections & overlays:** 5 year warranty on mattress inner cover; lifetime warranty on SmartCells
- APEX surfaces:** 3 year limited warranty, 1 year warranty on covers
- Tröst and Hälsa bed:** Bed frame (10 years), mechanical (4 years), electrical (2 years), wood products (1 year)
- Resten beds:** Bed frame (10 years), electrical (2 years)